

SUPER SWING

All hinges and brackets are galvanized to resist corrosion

Opens with the slightest touch and closes softly and quietly

Durable, Decorative, long lasting & low maintenance



Available in a wide selection of high-pressure laminate, aluminum or stainless finishes

Gasketed or non-gasketed models available

Galvanized or Stainless Steel kickplates available up to 48" high

SERIES 1000

SOLID WOOD CORE RETAIL IMPACT DOOR

Designed for openings up to 8' W x 8' H, the series 1000 is ideal where privacy into restricted areas and appearance are a major consideration. The "Super Swing" no spring gravity hinge opens at the slightest touch and closes softly and quietly. The "Super Swing" hinge system allows for minor door adjustments. Available in a large selection of colours and finishes, the series 1000 impact traffic doors are ideally suited for supermarkets, retail stores, restaurants, pharmacies and convenience stores. The series 1000 assists in environmental control, thus saving money on energy costs.



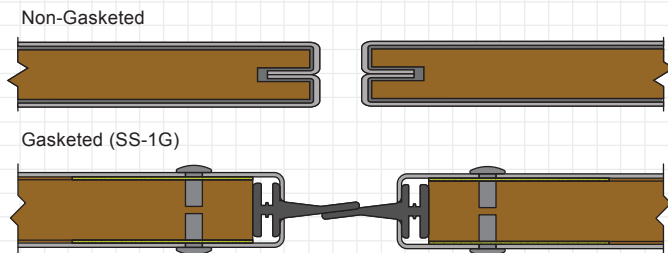


MODEL SS-1

All doors noted fully metal clad solid wood core doors on the door schedule shall be Series 1000 Model SS-1 as manufactured by Super Seal Mfg. Ltd. Woodbridge, Ontario.

Door body shall consist of a $\frac{3}{4}$ " thick exterior grade wood core with satin anodized aluminum sheet, chemically bonded to both sides. Door shall be furnished with 48" high 18 gauge galvanized steel kick plates on both sides of each panel and 18 gauge galvanized steel channel trim at the top, back, and leading edges. Each panel shall have a clear safety acrylic window 9" W x 14"H set in a black rubber molding. (Also available with Stainless Steel kickplates)

Model SS-1 Cross Sectional Details



MODEL SS-4

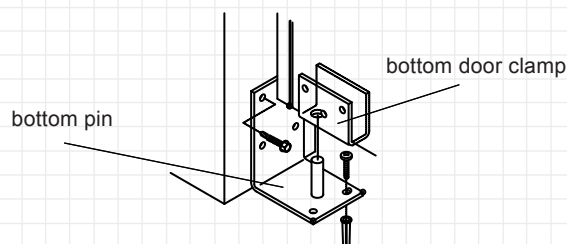
All doors noted fully metal clad solid wood core doors on the door schedule shall be Series 1000 Model SS-4 as manufactured by Super Seal Mfg. Ltd. Woodbridge, Ontario.

Door body shall consist of a $\frac{3}{4}$ " thick exterior grade wood core with a high-pressure laminate sheet, chemically bonded to both sides. Door shall be furnished with 48" high 18 gauge stainless steel kick plates on both sides of each panel and 18 gauge stainless steel channel trim at the top, back, and leading edges. Each panel shall have a clear safety acrylic window 9" W x 14"H set in a black rubber molding.

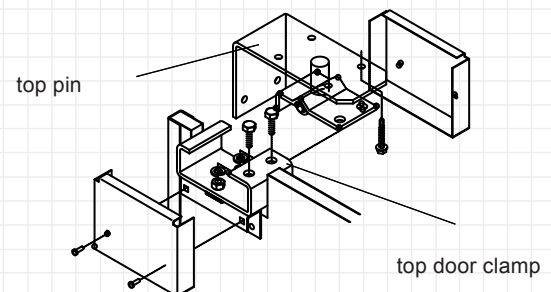
Model SS-4 Cross Sectional Details



Hinge Hardware for all series 1000 model doors shall be "Super Swing" no spring gravity hinges, zinc plated to resist corrosion.



Bottom Hinge Assembly



Top Hinge Assembly

Aluminum hinge covers are supplied as standard.

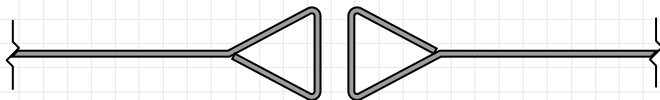


MODEL SS-6

All doors noted high pressure laminate clad sheet aluminum doors on the door schedule shall be Series 1000 Model SS-6 as manufactured by Super Seal Mfg. Ltd. Woodbridge, Ontario.

Door body shall consist of .064" thick one (1) piece aluminum alloy sheet, satin anodized finish with vertically formed Delta Edge for strength and rigidity. Each panel shall have a clear safety acrylic window 9"W x 14"H set in black rubber molding. (1 or 2 sided cladding available.)

Model SS-6 Cross Sectional Details



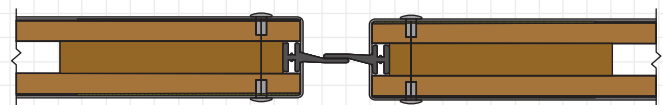
MODEL SS-7

All doors noted high pressure laminate clad sheet aluminum doors on the door schedule shall be Series 1000 Model SS-7 as manufactured by Super Seal Mfg. Ltd. Woodbridge, Ontario.

Door body shall be 1 1/2" thick overall consisting of a thick insulating foam core mounted between two(2) sheets of 1/2" thick exterior grade wood and entirely metal clad with 48" high 18 gauge galvanized steel kick plates and .032" thick aluminum satin anodized finish on the upper portion both sides of each panel. Each panel shall have a clear safety acrylic window 9"W x 14"H set in a black rubber molding. Door panels are fully gasketed.

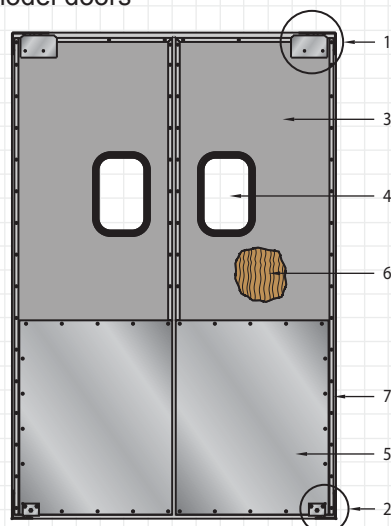
(Also available with Stainless Steel kickplates)

Model SS-7 Cross Sectional Details



DOOR ASSEMBLY DIAGRAM

for all series 1000 model doors

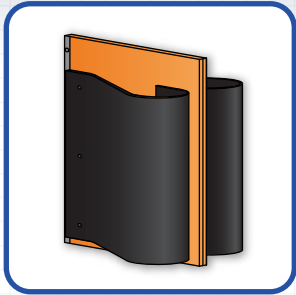


1. TOP HINGE ASSEMBLY
2. BOTTOM HINGE ASSEMBLY
3. AVAILABLE CLADDING:
 - HIGH PRESSURE LAMINATE
 - ANODIZED ALUMINUM
 - STAINLESS STEEL
4. 9" WIDE x 14" HIGH CLEAR SAFETY ACRYLIC WINDOW
5. KICK PLATES
6. AVAILABLE CORES
 - .064 SATIN ANODIZED ALUMINUM
 - 3/4" THICK EXTERIOR GRADE WOOD CORE
 - 1 1/2" THICK EXTERIOR GRADE WOOD CORE WITH INSULATION FOAM INSERTS
7. GALVANIZED OR STAINLESS STEEL TRIM

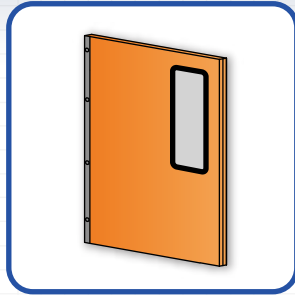
*** RECOMMENDED FRAMING REQUIREMENTS: 1/8" THICK x 4" WIDE FACE STEEL FRAME MOUNTED TO A SOLID FOUNDATION.

SERIES 1000 RETAIL IMPACT DOOR

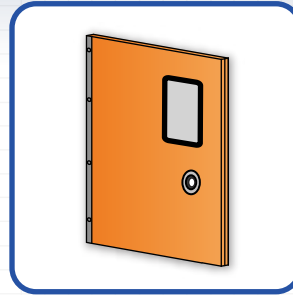
OPTIONS



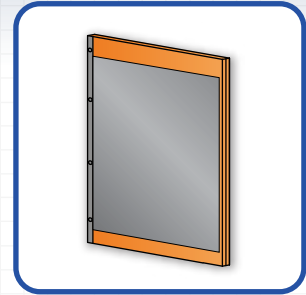
A. Spring Bumpers
5/16" thick HDP black formed,
available up to 42" high.



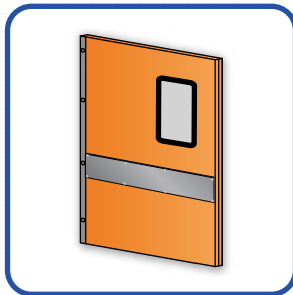
B. Custom Window



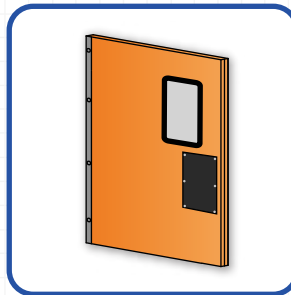
C. Chain Locking Collar



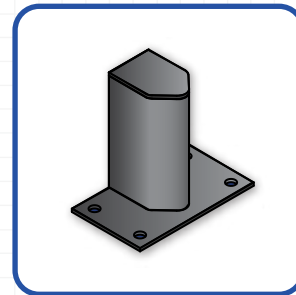
D. Kick Plates
1/4" thick ABS, 1/2" thick
HDP, stainless or galvanized
steel up to 48" high.



E. Cart Guard
1/2" thick X 4" high HDP.



F. Hand Push Plates
6" wide X 12" high stainless steel.

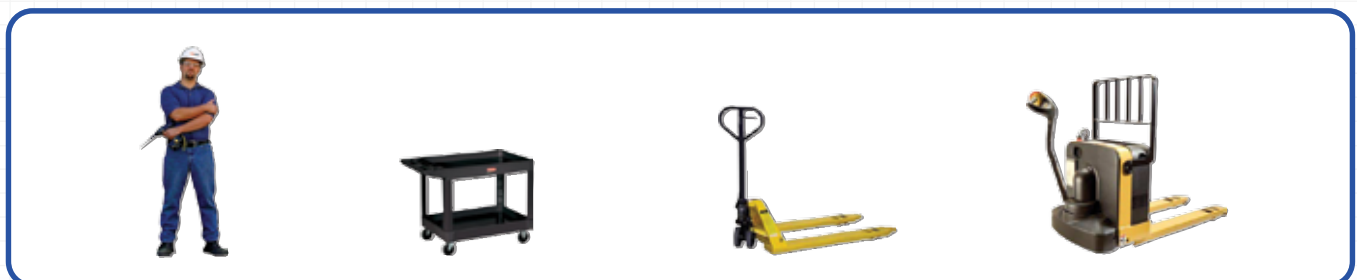


G. Jamb Guards
Floor mounted zinc plated,
9" or 18" high.

APPLICATIONS

- Auto Stores
- Beer Stores
- Department Stores
- Drug Stores
- Flower Shops
- Bakeries
- Delicatessen (Deli's)
- Distribution Centres
- Fish Markets
- Hospitals
- Liquor Stores
- Pet Stores
- Restaurants
- Super Centres
- Manufacturing
- Receiving Area
- Retail Outlets
- Supermarkets
- Variety Store
- Banquet Halls

TRAFFIC TYPES



Suitable for pedestrian, push cart, pallet jacks and motorized pallet traffic. Not recommended for man-ridden motorized traffic.



DEALER IMPRINT



** All Super Seal products are subject to design modifications without notice.
Product may be shown with non-standard options.