

KICKPLATE

DOOR OPENING: \_\_\_\_\_ W x \_\_\_\_\_ H

☐ DOUBLE ☐ SINGLE

QUANTITY: \_\_\_\_\_

OPTIONS

(CHECK BOX IF APPLICABLE)

☐ - TRANSOM

☐ - KICKPLATES (UP TO 48" HIGH)

☐ - "D" BUMPER

☐ - 90° FLOOR-MOUNT JAMB GUARDS

☐ - 90° JAMB-MOUNT JAMB GUARDS

☐ - 90°-135° JAMB-MOUNT

☐ JAMB GUARDS

☐ - 90°-135° WIDE ANGLE HINGE

☐ - GALVANIZED FRAME & SHAFT

☐ - 8 ga. STEEL FRAME

☐ - CUSTOM WINDOW (20" HIGH)

☐ - EXTENSION "U" BRACKETS

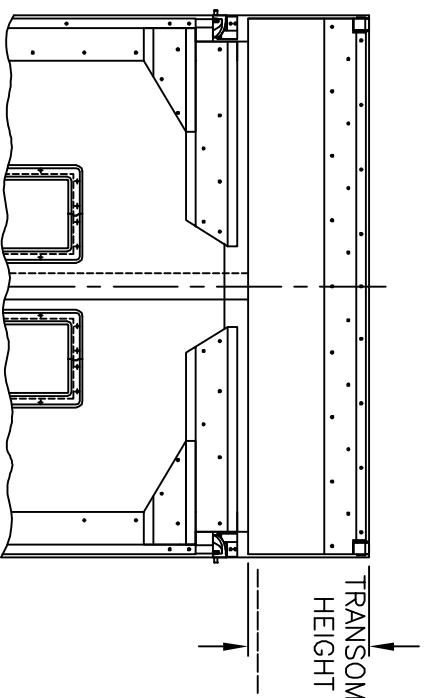
☐ - WELD PLATES

☐ - HOLD OPEN DEVICE

☐ - MAGNETIC CLOSURE

☐ - CHANNEL LOCKING DEVICE

☐ - CHAIN LOCKING COLLAR



TRANSOM

- 1 - TOP HINGE ASSEMBLY
- 2 - BOTTOM HINGE ASSEMBLY
- 3 - 1/2" THICK BLACK ABRASION RESISTANT RUBBER
- 4 - 1/2" THICK CLEAR SAFETY ACRYLIC WINDOW
- 5 - 11 ga. ROLL-FORMED STEEL FRAME

\*\*\* RECOMMENDED FRAMING REQUIREMENTS:  
1/4" THICK x 6" WIDE FACE STEEL FRAME MOUNTED TO A SOLID FOUNDATION.



SERIES 4000 - MODEL 4100  
FLEXIBLE RUBBER IMPACT DOOR

DATE: FEB-03-09 SCALE: -

DRAWN: GK, OC DWG NO: L4100-A

APPROVED: RT, ST PART NO: N/A

S.S. QUOTE REF. # \_\_\_\_\_

CUSTOMER \_\_\_\_\_

APPROVED BY: \_\_\_\_\_

P/O No.: \_\_\_\_\_

DATE: \_\_\_\_\_