

DOOR OPENING:

W x H

QUANTITY: _____

COVER FABRIC: _____

COLOR: _____

OPTIONS (CHECK BOX IF APPLICABLE)

- ☐ FLAT TOP UNIT
- ☐ TAPERED UNIT
- ☐ EXTRA WIDTH OF UNIT
- ☐ EXTRA HEIGHT OF UNIT
- ☐ EXTRA HEADER CURTAIN DROP
- ☐ EXTRA INWARD PROJECTION
- ☐ STEEL PROTECTIVE GUARD

(MOUNTING HARDWARE NOT INCLUDED)

- ☐ MONOFILAMENT FABRIC

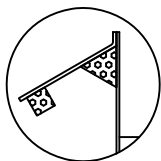
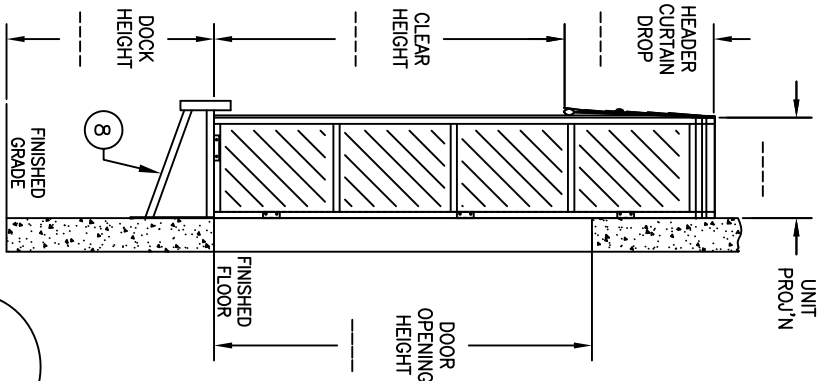
- ☐ BLACK

- ☐ BOTTOM DRAFT PADS

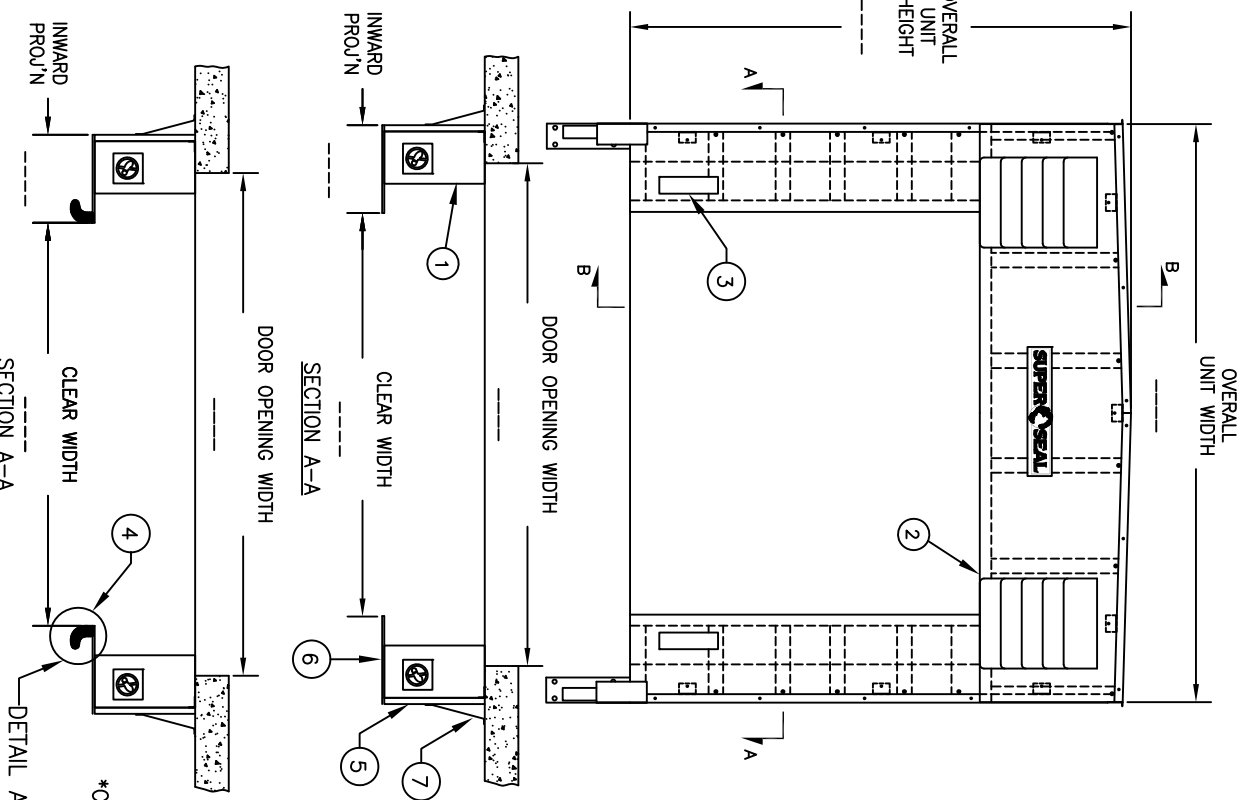
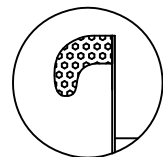
FABRIC TYPE: _____

COLOUR: _____

- ☐ SUPER SPLIT PROTECTIVE FLAPS
- ☐ GUIDE STRIPE
 - ☐ 14" (STD.) ☐ 24" ☐ FULL
- ☐ SUPER SNUG
 - ☐ 'ST' STYLE ☐ 'RT' STYLE
 - ☐ COMMON MEMBER UNIT
 - ☐ INFLATABLE HEADER IN LIEU OF FABRIC CURTAIN (SEE 0401A)



DETAIL A
SUPER SNUG 'RT' STYLE



SECTION A-A
OPTION: 'ST' STYLE

DETAIL A - ALTERNATIVE
SUPER SNUG 'ST' STYLE
C/W MONOFILAMENT OPTION ONLY
*ADD 6" TO INWARD PROJ'N
FOR SUPER SNUG*

LEGEND

1. OPTION: BOTTOM DRAFT PADS
2. HEAD CURTAIN C/W IMPACT CORNER FLAPS & FIBERGLASS STAYS
3. YELLOW GUIDE STRIPE - 14" HIGH
4. OPTION: SUPER SNUG 'RT' STYLE
5. STEEL VERTICAL MEMBER C/W PAINTED STEEL SIDING
6. VERTICAL INWARD PANEL
7. STABILIZING BRACKET
8. OPTION: STEEL PROTECTIVE GUARDS

S.S. QUOTE REF. # _____

CUSTOMER _____

APPROVED BY: _____

P/O No.: _____

DATE: _____



SERIES 401 - GALVANIZED FRAME
STATIONARY TRUCK DOCK SHELTER

DATE: REV. APR-24-16	SCALE: 1:48
DRAWN: SH	DWG NO: LA01-D
APPROVED: ST	PART NO: