

- 1 - DOOR FABRIC
- 2 - STEEL UPRIGHT C/W FRONT COVER
- 3 - FABRIC ROLL DRUM
- 4 - STEEL BREAKAWAY BOTTOM BAR C/W "SUPEREDGE SENSOR"
- 5 - THRESHOLD PHOTO EYE
- 6 - MOTOR C/W BRAKE AND GEARBOX
- 7 - NON METALLIC NEMA 4X CONTROL PANEL
- 8 - 1 PUSH BUTTON STATION C/W GREEN PUSH BUTTON AND RED EMERGENCY STOP
- 9 - WIRELESS BOTTOM BAR CONTROLLER
- 10 - MANUAL CRANK HANDLE
- 11 - ENCODER BOX
- 12 - AUTO-RETURN FEATURE

S.S. QUOTE REF. # \_\_\_\_\_

CUSTOMER \_\_\_\_\_

APPROVED BY: \_\_\_\_\_

P/O No.: \_\_\_\_\_

DATE: \_\_\_\_\_

DOOR OPENING \_\_\_\_\_ W x \_\_\_\_\_ H

QUANTITY: \_\_\_\_\_

POWER: \_\_\_\_\_ VOLTS \_\_\_\_\_ PHASE

SPEED  SINGLE-32  DUAL-50

MOTOR LOCATION  LEFT  RIGHT

CONTROL PANEL  LEFT  RIGHT

FABRIC TYPE: \_\_\_\_\_

FABRIC COLOUR: \_\_\_\_\_

OPTIONS-ACTIVATION (CHECK DESIRED OPTIONS)

FLOOR LOOP DETECTOR (WIRE BY OTHERS) QUANTITY \_\_\_\_\_ Pcs

PHOTO EYE QUANTITY \_\_\_\_\_ Pcs

REFLECTIVE  THRU-BEAM QUANTITY \_\_\_\_\_ Pcs

MOTION DETECTOR QUANTITY \_\_\_\_\_ Pcs

RADIO CONTROL (STD. 2 TRANSMITTERS) QUANTITY \_\_\_\_\_ Pcs

SINGLE BUTTON  MULTI-BUTTON QUANTITY \_\_\_\_\_ Pcs

GREEN PUSH BUTTON STATION QUANTITY \_\_\_\_\_ Pcs

EMERGENCY STOP STATION QUANTITY \_\_\_\_\_ Pcs

PULL CORD QUANTITY \_\_\_\_\_ Pcs

COMBO STATION-GREEN PUSH QUANTITY \_\_\_\_\_ Pcs

BUTTON STATION EMERGENCY STOP QUANTITY \_\_\_\_\_ Pcs

OTHER \_\_\_\_\_

OPTIONS-EXTRA REVERSING DEVICES (CHECK DESIRED OPTIONS)

PHOTO EYE THRU-BEAM QUANTITY \_\_\_\_\_ Pcs

FLOOR LOOP DETECTOR (WIRE BY OTHERS) QUANTITY \_\_\_\_\_ Pcs

COMMUNICATION DEVICES

BEACON WARNING LIGHT QUANTITY \_\_\_\_\_ Pcs

HORN QUANTITY \_\_\_\_\_ Pcs

TRAFFIC LIGHT QUANTITY \_\_\_\_\_ Pcs

OTHER \_\_\_\_\_

OPTIONS DOOR (CHECK DESIRED OPTIONS)

WINDOW

FULL  PARTIAL \_\_\_\_\_

FABRIC ROLL CANOPY  MOTOR CANOPY

PAINTED  GALVANIZED  STAINLESS STEEL

HOT DIP GALVANIZED FRAME

STAINLESS STEEL FRAME

PROJECTION FRAME \_\_\_\_\_

OTHER \_\_\_\_\_

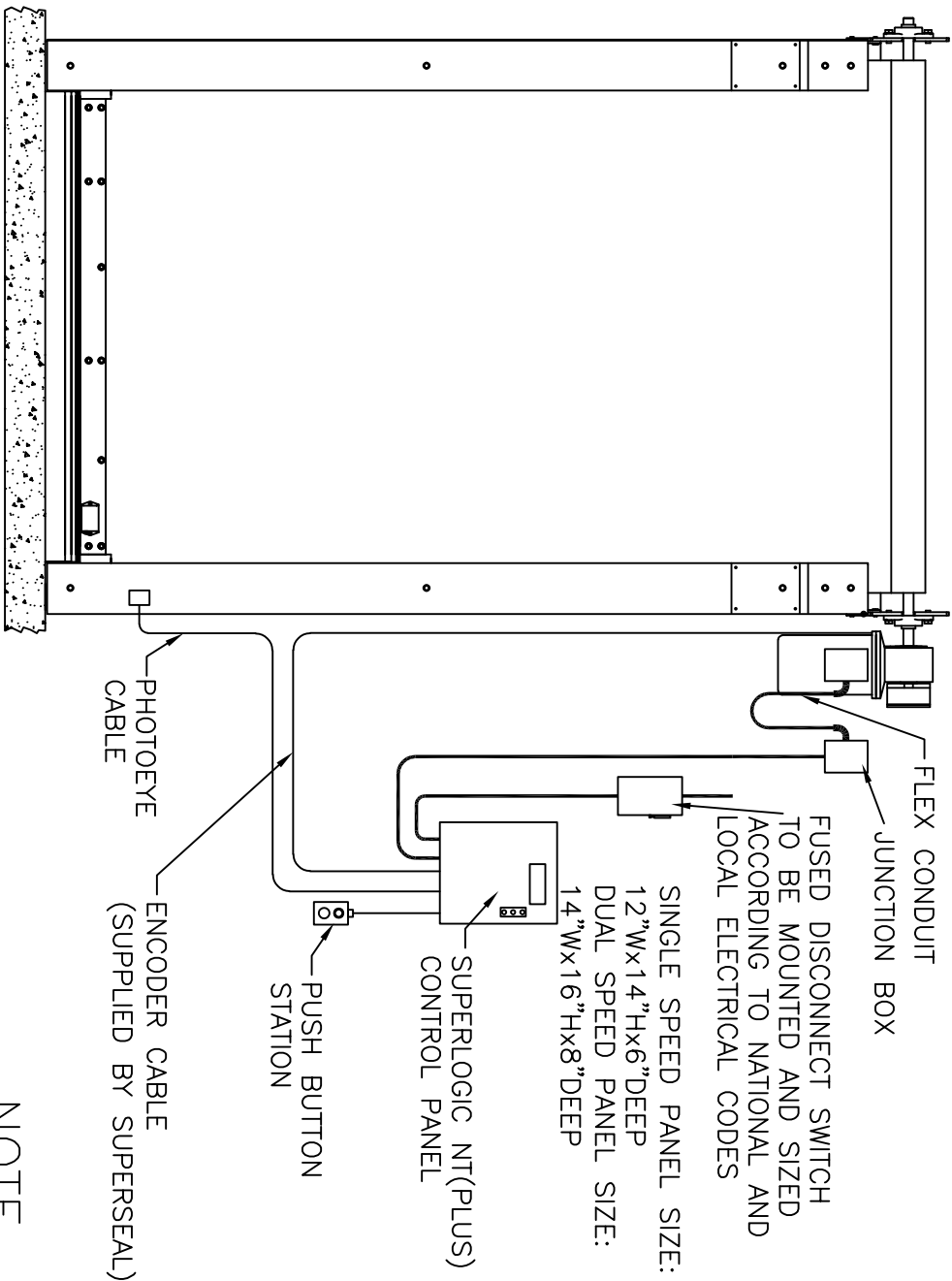
# SUPER SEAL

SERIES 8500 - MODEL 8500LC  
CLEARANCE REQUIREMENTS

DATE: MAY-25-10 SCALE: 1:30

DRAWN: OC DWG NO: L8500LC-A / 1

APPROVED: ST PART NO: N/A



## NOTE

NOT SUPPLIED BY SUPERSEAL:

- ALL ANCHORING AND SPECIAL BRACKETS REQUIRED FOR INSTALLATION.
- ALL CONDUIT, WIRING, EXTERNAL DEVICE INSTALLATION AND LABOUR.
- WIRING UNLESS OTHERWISE SPECIFIED.
- FUSED DISCONNECT.

## NOTE

LOW VOLTAGE MUST BE WIRED SEPARATE AND APART FROM HIGH VOLTAGE WIRING

### MAIN SUPPLY

- 208-240V, 3PH, 60HZ
- 460-480V, 3PH, 60HZ
- 575-600V, 3PH, 60HZ

### RECOMMENDED FUSE SIZE

SUPERLOGIC III (SINGLE SPEED)

- 208-240V FUSE WITH 6A, TYPE CC
- 460-480V FUSE WITH 3A, TYPE CC
- 575-600V FUSE WITH 2.5A, TYPE CC

- 1HP 230V - FLA = 3.8A
- 1HP 460V - FLA = 2.2A
- 1HP 575V - FLA = 1.8A

SUPERLOGIC III PLUS (DUAL SPEED)

- 208-240V FUSE WITH 15A, TYPE CC
- 460-480V FUSE WITH 8A, TYPE CC
- 575-600V FUSE WITH 6A, TYPE CC

- 2.5HP 230V - FLA = 6.4A
- 2.5HP 460V - FLA = 3.7A
- 2.5HP 575V - FLA = 3.0A
- 3.0HP 230V - FLA = 7.4A
- 3.0HP 460V - FLA = 4.3A
- 3.0HP 575V - FLA = 2.6A



SERIES 8500 - MODEL 8500LC  
TYPICAL WIRING LAYOUT

DATE: DEC-07-11	SCALE: N.T.S.
DRAWN: OC	DWG NO: L8500LC-A / 2
APPROVED:	PART NO: N/A