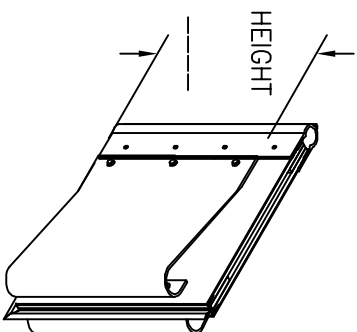
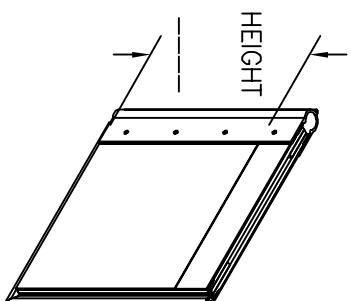


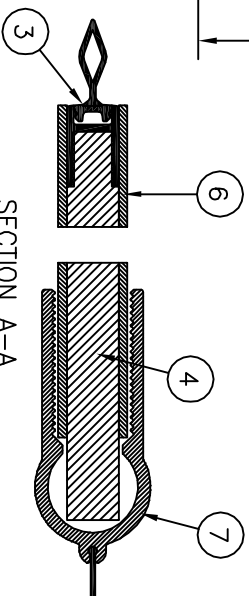
ALL-STAR GASKETED  
DOUBLE



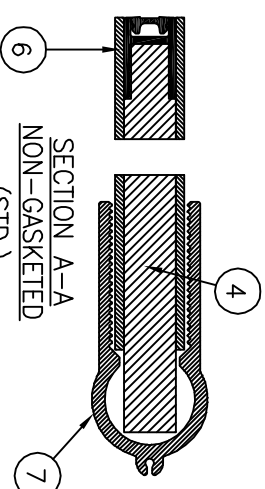
SPRING BUMPER



KICKPLATE



SECTION A-A  
GASKETED  
(OPTIONAL)



SECTION A-A  
NON-GASKETED  
(STD.)

- 1 – TOP HINGE ASSEMBLY
- 2 – BOTTOM HINGE ASSEMBLY
- 3 – PVC PERIMETER GASKETED EDGE TRIM (OPTIONAL)
- 4 – PREMIUM ULTRA CORE PLYWOOD CORE
- 5 – 9" x 14" CLEAR LEXAN NON-POPOUT WINDOW
- 6 – 1/8" "TUFF PLUS" ABS FACE PANEL
- 7 – CLEAR ANODIZED SPINE PROFILE

\*\*\* RECOMMENDED FRAMING REQUIREMENTS:  
1/4" THICK x 4" WIDE FACE STEEL FRAME MOUNTED  
TO A SOLID FOUNDATION.

DOOR OPENING:

\_\_\_\_\_ W x \_\_\_\_\_ H

☐ DOUBLE ☐ SINGLE

QUANTITY: \_\_\_\_\_

COLOR: \_\_\_\_\_

OPTIONS

(CHECK BOX IF APPLICABLE)

☐ GASKETED ☐ NON-GASKETED

☐ 5/16" THICK HDP SPRING BUMPERS

\_\_\_\_\_H (UP TO 42" HIGH)

☐ CUSTOM WINDOW DESIGN (CLEAR)

☐ RECTANGULAR \_\_\_\_\_W x \_\_\_\_\_H

☐ ROUND – DIAMETER: \_\_\_\_\_

☐ 9 1/4" JAMB GUARD

☐ KICKPLATES: (UP TO 48" HIGH)

☐ 1/8" ABS ☐ STAINLESS STEEL

☐ 1/2" HDP

☐ PUSH PLATES

☐ 1/8" ABS ☐ STAINLESS STEEL

☐ CART GUARDS

☐ 1/2" HDP

☐ CHAIN LOCKING COLLAR

☐ DOUBLE DUTCH

**SUPER SEAL**

ALL-STAR SERIES – MODEL ALL-STAR 75  
LITERATURE DRAWING

DATE: JAN-31-19	SCALE: 1/24
DRAWN: OC, AC, AS	DWG NO: L-ALLSTAR / A
APPROVED: ST	PART NO: N/A