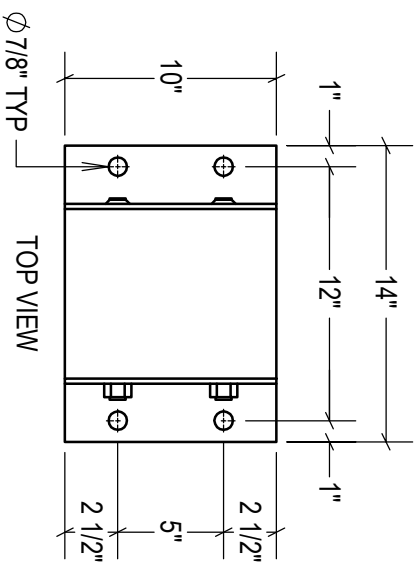
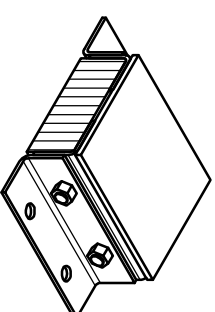
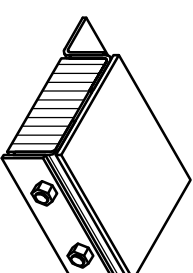


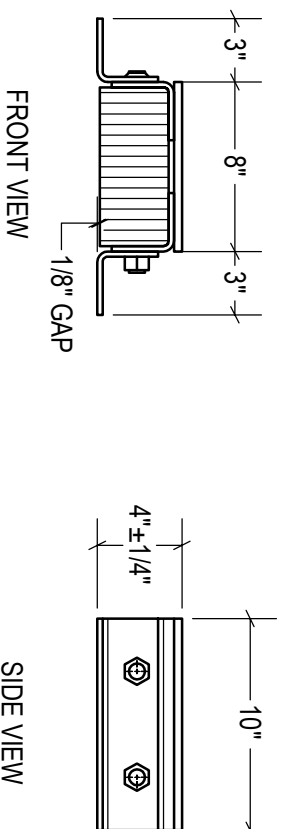
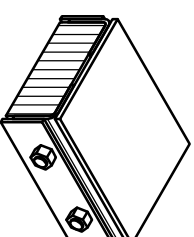
STANDARD
Bolted (2) Sides



OPTIONAL
P1 CONFIG.
Welded (1) Side




OPTIONAL
P2 CONFIG.
Welded (2) Sides



SPECIFICATIONS:

LAMINATED PADS SHALL BE MADE FROM RECYCLED CONVEYOR BELTING AND TIRE RUBBER CUT TO 3.25" X 10" PUNCHED AND ASSEMBLED THROUGH 3/4" RODS BETWEEN 3" X 3" X 1/4" FORMED STEEL UNDER 1,500 LBS OF PRESSURE. FINISH OF EXPOSED METAL SHALL BE PAINTED WITH WATER-BASED.

DATE	REV. NO.	BY	DESCRIPTION
<div>  </div>			
STEEL-FACED LAMINATED BUMPER			
S-1014-4 SF-38			
DATE: APR-22-20	SCALE: 1:10		
DRAWN: AS	DWG NO: S-1014-4 SF-38		
APPROVED: ST	PART NO: S-1014-4 SF-38		