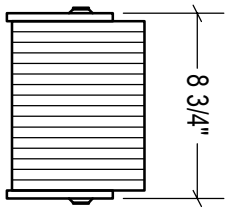
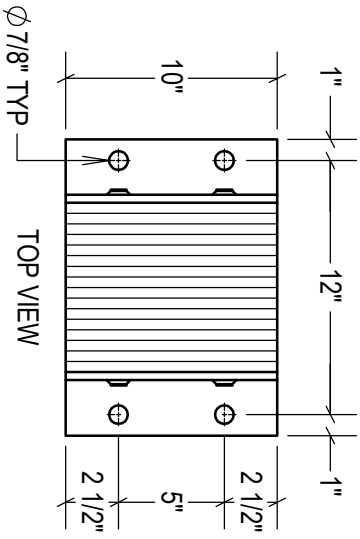


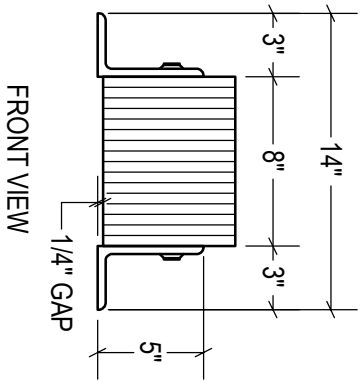
P1 CONFIG.



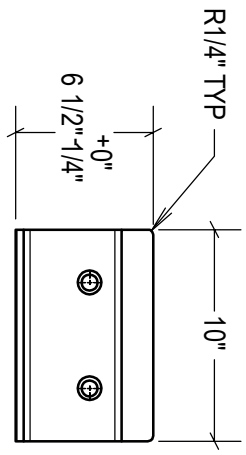
P2 CONFIG.



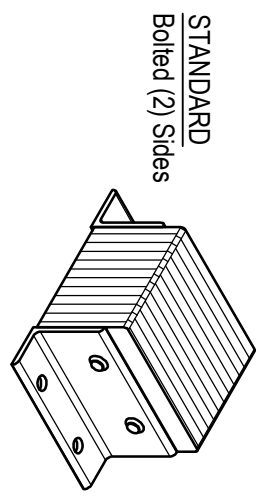
TOP VIEW



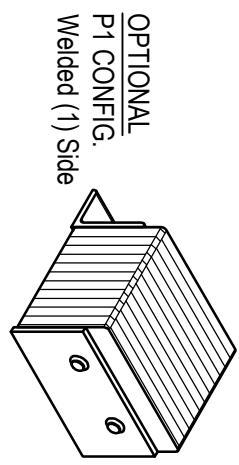
FRONT VIEW



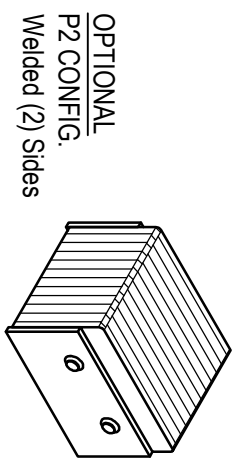
SIDE VIEW



STANDARD
Bored (2) Sides



OPTIONAL
P1 CONFIG.
Welded (1) Side



OPTIONAL
P2 CONFIG.
Welded (2) Sides

SPECIFICATIONS:

LAMINATED PADS SHALL BE MADE FROM REINFORCED TRUCK TIRES CUT TO 6.125" x 10" PUNCHED AND ASSEMBLED THROUGH 3/4" RODS BETWEEN 3" x 5" x 3/8" STRUCTURAL STEEL UNDER 1,500 LBS OF PRESSURE. FINISH OF EXPOSED METAL SHALL BE PAINTED WITH WATER-BASED.



LAMINATED RUBBER BUMPER S-1014-5

| DATE | REV. NO. | BY | DESCRIPTION |
|-------------------|----------|----|-------------|
| DATE: APR-22-20 | | | |
| DRAWN: AS | | | |
| APPROVED: ST | | | |
| SCALE: 1:10 | | | |
| DWG NO: S-1014-5 | | | |
| PART NO: S-1014-5 | | | |