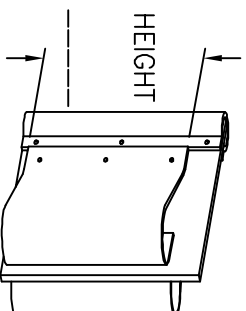
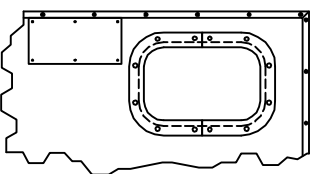


- 1- TOP HINGE ASSEMBLY (ZINC PLATED)
- 2- BOTTOM HINGE ASSEMBLY (ZINC PLATED)
- 3- ANODIZED ALUMINUM SPINE PROFILE
- 4- 9" WIDE X 14" HIGH CLEAR SAFETY ACRYLIC WINDOW
- 5- HIGH PRESSURE LAMINATE FACE PANEL
- 6- 11mm THICK EXTERIOR GRADE PLYWOOD CORE
- 7- STAINLESS STEEL TRIM

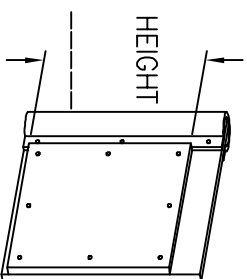
*** RECOMMENDED FRAMING REQUIREMENTS:
 1/8" THICK X 4" WIDE FACE STEEL FRAME MOUNTED TO A
 SOLID FOUNDATION



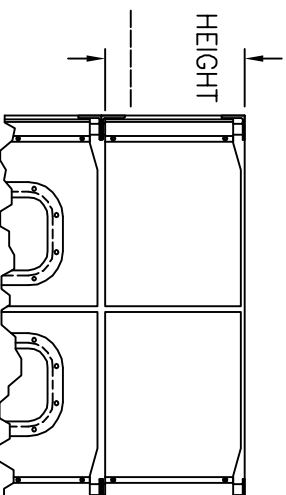
SPRING BUMPER



PUSH PLATE



KICKPLATE



DOUBLE DUTCH

DOOR OPENING:

_____ W x _____ H

☐ DOUBLE ☐ SINGLE

QUANTITY: _____

IS DOOR JAMB OVER 8"W ☐ Y ☐ N ☐
 HALLWAY INSTALLATION? ☐ Y ☐ N ☐

OPTIONS:

(CHECK BOX IF APPLICABLE)

DOOR CLADDING:

☐ FULL LAMINATE PANELS

BRAND: _____

COLOR: _____

MFR'S#: _____

☐ FULL ALUMINUM PANELS

☐ FULL STAINLESS STEEL PANELS

☐ FULL GALVANIZED STEEL PANELS

☐ CUSTOM WINDOW DESIGN

☐ RECTANGULAR _____ W x _____ H

☐ ROUND - DIAMETER: _____

☐ 5/16" THICK HDP SPRING BUMPERS
 (UP TO 42" HIGH)

☐ 1/2" HDP KICKPLATES (UP TO 48" HIGH)

☐ 1/2" HDP CART GUARD (4" HIGH)

☐ S.S. HAND PUSH PLATE (6"W x 12"H)

☐ 9 1/4" JAMB GUARD

☐ CHAIN LOCKING COLLAR

☐ SLIDE LOCK

☐ DOUBLE DUTCH



SERIES 1500 - MODEL 1502
 WOOD CORE IMPACT DOOR

DATE: OCT-02-18 SCALE: N.T.S.

DRAWN: OC, AS DWG NO: L1502

APPROVED: ST PART NO: N/A

S.S. QUOTE REF. # _____
 CUSTOMER _____
 APPROVED BY: _____
 P/O No.: _____
 DATE: _____