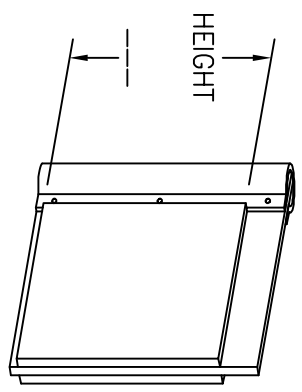
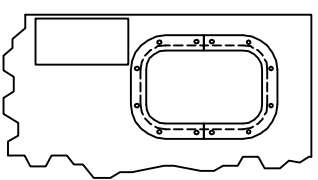


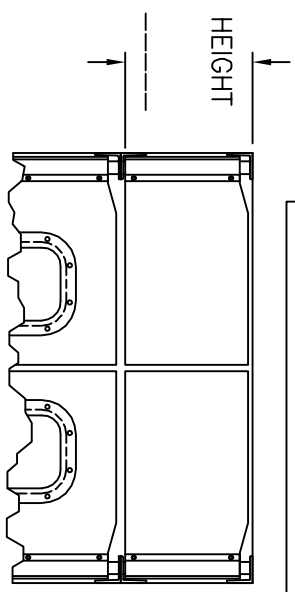
SPRING BUMPER



KICKPLATE



PUSH PLATE



DOUBLE DITCH

DOOR OPENING:

_____ W x _____ H

☐ DOUBLE ☐ SINGLE

QUANTITY: _____

COLOR: _____

IS DOOR JAMB OVER 8"W ☐ Y ☐ N ☐

HALLWAY INSTALLATION? ☐ Y ☐ N ☐

OPTIONS:

(CHECK BOX IF APPLICABLE)

☐ CUSTOM WINDOW DESIGN

☐ RECTANGULAR _____ W x _____ H

☐ ROUND - DIAMETER: _____

☐ 5/16" THICK HDP SPRING BUMPERS

(UP TO 42" HIGH)

☐ 1/4" ABS KICKPLATES (UP TO 48" HIGH)

☐ 1/4" ABS CART GUARD (4" HIGH)

☐ S.S. HAND PUSH PLATE (6"W x 12"H)

☐ 9 1/4" JAMB GUARD

☐ CHAIN LOCKING COLLAR

☐ SLIDE LOCK

☐ DOUBLE DUTCH

- 1 - TOP HINGE ASSEMBLY (ZINC PLATED)
- 2 - BOTTOM HINGE ASSEMBLY (ZINC PLATED)
- 3 - ANODIZED ALUMINUM SPINE PROFILE
- 4 - 9" WIDE x 14" HIGH CLEAR SAFETY ACRYLIC WINDOW
- 5 - 1/4" THICK ABS DOOR BODY

*** RECOMMENDED FRAMING REQUIREMENTS:
1/8" THICK x 4" WIDE FACE STEEL FRAME MOUNTED
TO A SOLID FOUNDATION.



SERIES 1500 - MODEL 1504
ABS IMPACT DOOR

DATE: OCT-02-18	SCALE: N.T.S.
DRAWN: OC, AS	DWG NO: L1504
APPROVED: ST	PART NO: N/A

S.S. QUOTE REF. # _____
CUSTOMER _____
APPROVED BY: _____
P/O No.: _____
DATE: _____