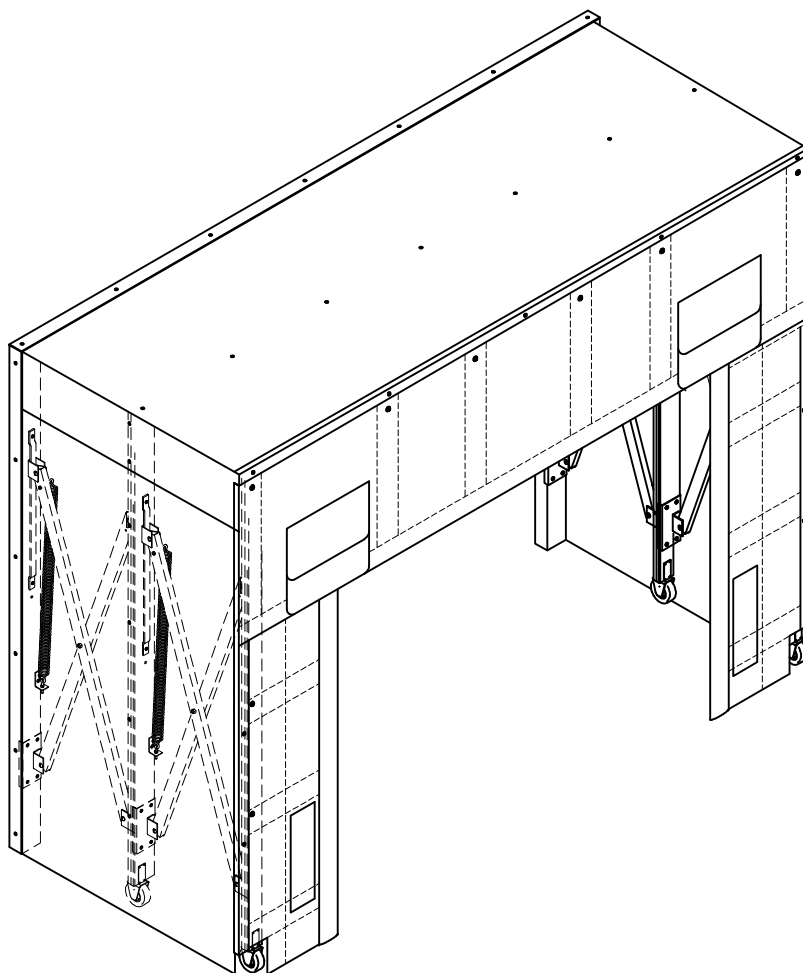


SERIES 0501 - DOUBLE RETRACTABLE TRUCK SHELTER FOR STEEL FRAME - WITH CASTORS INSTALLATION INSTRUCTIONS

Read all instructions before installing door. Super Seal Mfg. Ltd. will not be held responsible for improper installation of anchoring devices, or for installation into aged or unsound concrete, concrete block, or other wall or floor material which may result in premature product wear, product failure, property damage, or personal injury.



SERIES 0501 - RETRACTABLE TRUCK SHELTER INSTALLATION LISTS

THE FOLLOWING LISTS COVER BASIC INSTALLATION, INCLUDING SOME OPTIONS.

| No. | Components Required (per Unit) | Qty. | No. | Recommended Tools | Qty. |
|-----|------------------------------------|------|---------------------------------|------------------------------------|------|
| 1 | Vertical Panels | 2 | 1 | Measuring Tape | 1 |
| 2 | Header Panel | 1 | 2 | Plumb Line or Level | 1 |
| 3 | Vertical Frames (Scissor Assembly) | 2 | 3 | Pencil or Marker | 1 |
| 4 | Front Header Cross-Member | 1 | 4 | Square | 1 |
| 5 | Rear Header Cross-Member | 1 | 5 | Power Drill | 1 |
| 6 | Projection Material (Top) | 1 | 6 | #3 Robertson Driver Bit | 1 |
| 7 | Projection Material (Side) | 2 | 7 | 3/8" Hex Head Driver Bit | 1 |
| 8 | Trim Angle | 3 | 8 | 5/16" Hex Head Driver Bit | 1 |
| 9 | Bottom Draft Flaps (Optional) | 2 | 9 | Hammer Drill | 1 |
| | | | 10 | 3/8" Masonry Drill Bit | 1 |
| No. | Hardware Required (per Unit) | Qty. | 11 | Hammer | 1 |
| 1 | 3/8" x 3" Sleeve Anchors | 12 | 12 | 1/2" Wrench | 1 |
| 2 | #10 x 3/4" Hex Washer Tek Screw | 146 | 13 | Caulking Gun | 1 |
| 3 | 1/4" Flat Washer | 140 | 14 | Caulking - Outdoor Acrylic Type | |
| 4 | 1/4" x 1 1/2" Hex Washer Tek Screw | 66 | | | |
| 5 | 3/8" BS WASHER | 66 | Bottom Draft Flap Option | | |
| 6 | Wind Straps (24" Bungee) | 2 | No. | Recommended Tools | Qty. |
| 7 | #3 Steel Lion Coil Chain-Zinc | 2 | 1 | 3/8" x 1 7/8" Sleeve Anchors | 2 |
| 8 | Installation Instructions | 1 | 2 | 1/4" x 1 1/2" Hex Washer Tek Screw | 6 |
| | | | 3 | 3/8" Washer | 2 |
| | | | 4 | 24" Rope (With Hooked Ends) | 2 |
| | | | 5 | Bottom Draft Pad (Left) | 1 |
| | | | 6 | Bottom Draft Pad (Right) | 1 |

SERIES 0501 - RETRACTABLE TRUCK SHELTER

INSTALLATION INSTRUCTIONS

READ ALL INSTRUCTIONS BEFORE INSTALLING SHELTER. SUPER SEAL MFG. LTD. WILL NOT BE HELD RESPONSIBLE FOR IMPROPER INSTALLATION OF ANCHORING DEVICES, OR FOR INSTALLATION INTO AGED OR UNSOUND CONCRETE, CONCRETE BLOCK, OR OTHER WALL OR FLOOR MATERIAL WHICH MAY RESULT IN PREMATURE PRODUCT WEAR, PRODUCT FAILURE, PROPERTY DAMAGE, OR PERSONAL INJURY

1. Check Order

a. Measure door opening height and width.

Make sure dimensions match the Purchase Order.

Make sure there is enough space to install shelter (Figure 1 - Standard Unit).

* Check for existing:

- dock seals
- bollards or obstacles
- lights and conduit
- drains.



**MAKE SURE THERE IS ENOUGH SPACE
BETWEEN THE DOOR OPENING TO INSTALL THE
SHELTER FRAMES.**

This unit is designed for a ground level approach.

b. **Check Components and Hardware Supplied List.** Make sure all components and hardware are present.

c. **Check Recommended Tools List.** Make sure all recommended tools are available.

d. **Determine method of mounting shelter to wall.**

- Super Seal supplies 3/8" sleeve anchors with the shelter. **The customer must supply any other mounting hardware.**

- **Concrete Block, Precast Concrete, or Brick wall:** Use supplied sleeve anchors. If anchors will not hold, use 3/8" threaded rod for through-bolt (not supplied).

- **Metal Siding:** Use 3/8" threaded rod for through-bolt fastening with steel or wood backup plate (not supplied).



**WELDING THE SHELTER TO THE WALL
IS NOT RECOMMENDED.**

2. Prepare Dock Door Opening

a. Measure and mark center of dock door opening (Figure 2).

- * Mark centerline on dock floor.
- * Mark centerline on lintel above door.
(Extend line to 138" above ground level.)
- * **Make sure marks are plumb** to each other.

b. Measure Head Frame width and divide by 2.

c. Mark Vertical Frame positions.

- * Measure 1/2 the Head Frame width from ground level centerline to one side of level line.
- * **Mark.**
- * **Repeat** for other side.

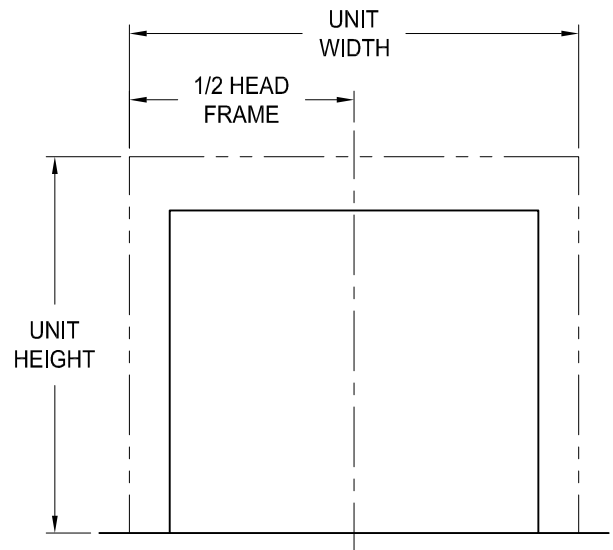


fig. 1

3. Determine left and right vertical frames: The vertical frame should be mounted so that the tension spring assembly is positioned at the top inside edge "Close to the door opening" (fig. 2).

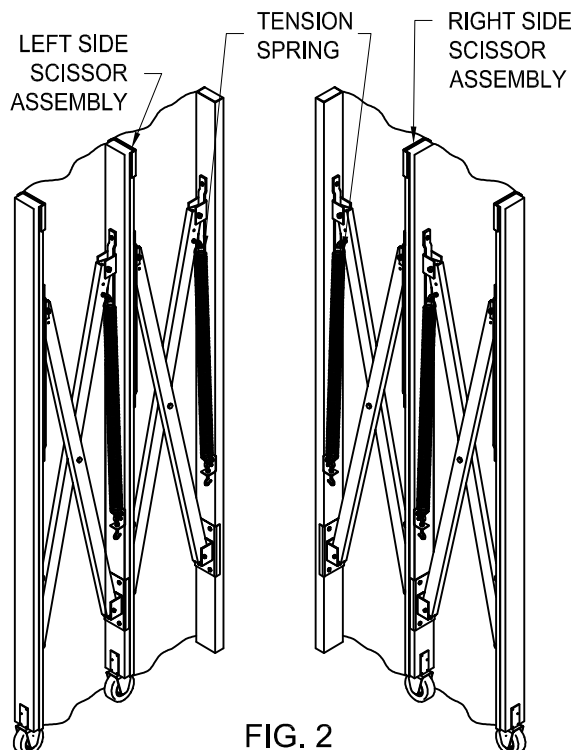


FIG. 2

4. Mount vertical frames to wall:

- * Position vertical frames on wall so that the outside edge of the back leg is flush with the vertical lines from fig. 3.
- * Set frame $\frac{1}{2}$ " above floor.
- * Be sure that frames are plumb from top to bottom.
- * Using 3/8" concrete drill bit, drill thru mounting holes.
- * Insert 3/8" sleeve anchors and tighten with 1/2" socket wrench (fig. 3).

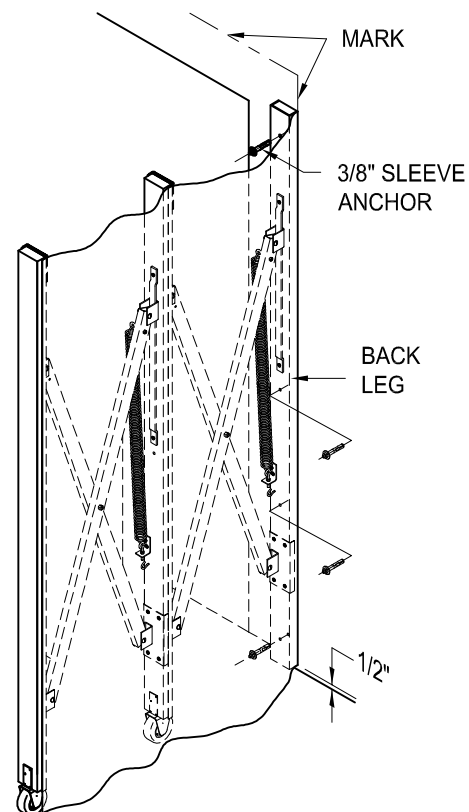


FIG. 3



THE SCISSOR EXTENSION ARMS MAY EXTEND FORWARD WHEN MOUNTING THE VERTICAL FRAMES. USE CAUTION WHEN MOUNTING THE FRAME

5. Mount rear header cross member:

- * Position rear header cross-member into place (fig. 4).
- * Using 3/8" concrete drill bit, drill thru mounting holes into wall.
- * Insert 3/8" sleeve anchors and tighten with 1/2" socket wrench (fig. 4).

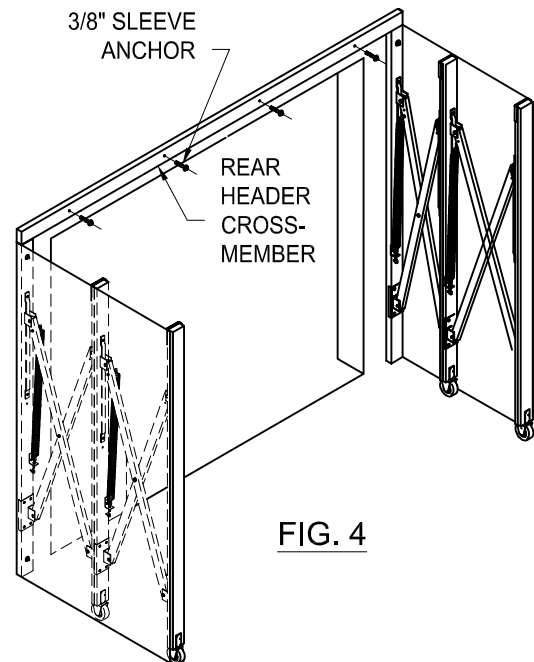


FIG. 4

6. Attach front & middle header cross-members:

- * Connect front & middle header cross-members to left and right verticals by sliding tongues at each end of header cross-members into slots at top end of verticals (fig. 5a).
- * Secure tabs with $\frac{1}{4}$ " X $\frac{3}{4}$ " hex washer tek screw (fig. 5b).

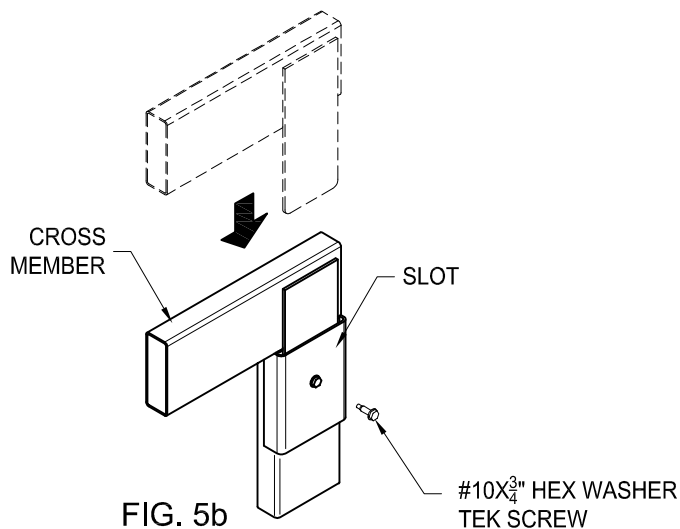


FIG. 5b

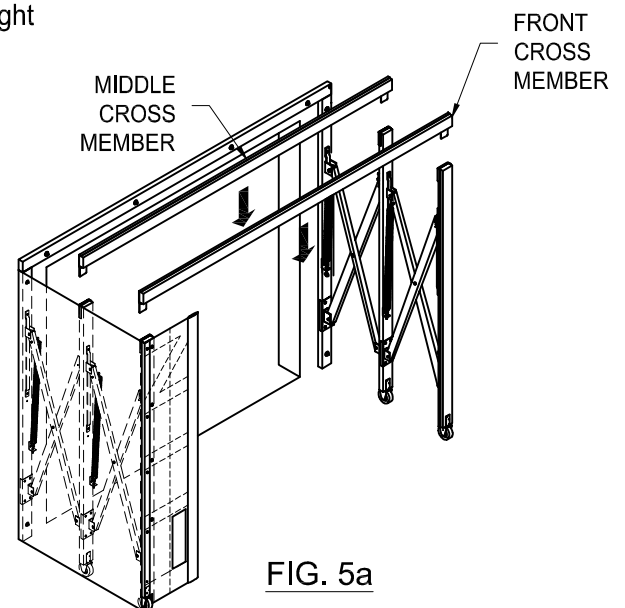


FIG. 5a

7. Attach header curtain to frame: Mount curtain starting from the center and working outwards to ensure a tight fit.

* Using #10x3/4" hex washer tek screws; attach header curtain from center and work outwards by screwing beside each stay (fig. 6).

* SCREW TOP EDGE ONLY!



PROJECTION MATERIAL TO BE ATTACHED LATER.

8. Attach top projection material: Prior to attaching the top projection material, release retraction arm to the desired projection. To ensure that this position remains constant, tie off arms with chain (fig. 7).

* Release the top projection material from the top center outwards over both sides of the unit (fig. 8).

* Using 5/16" hex driver bit, screw fabric to steel frame with #10 x 3/4" hex washer tek screws, ensuring a proper fit.



PROJECTION MUST OVERLAP HEAD CURTAIN. ALWAYS ENSURE A PROPER FIT.

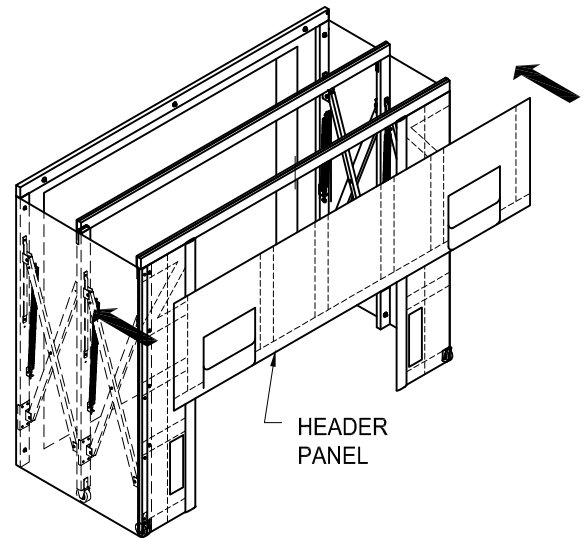


FIG. 6

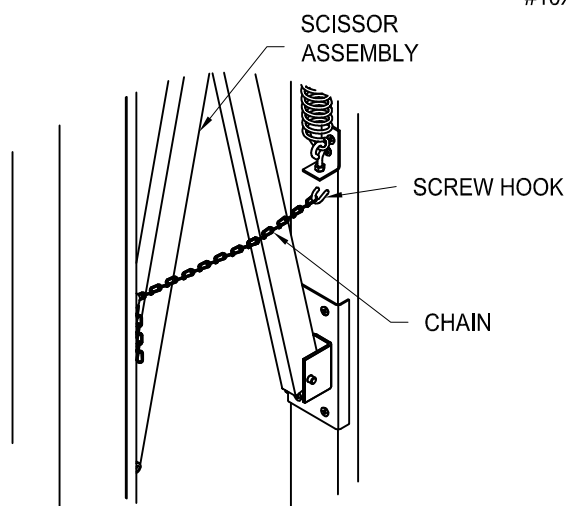


FIG. 7

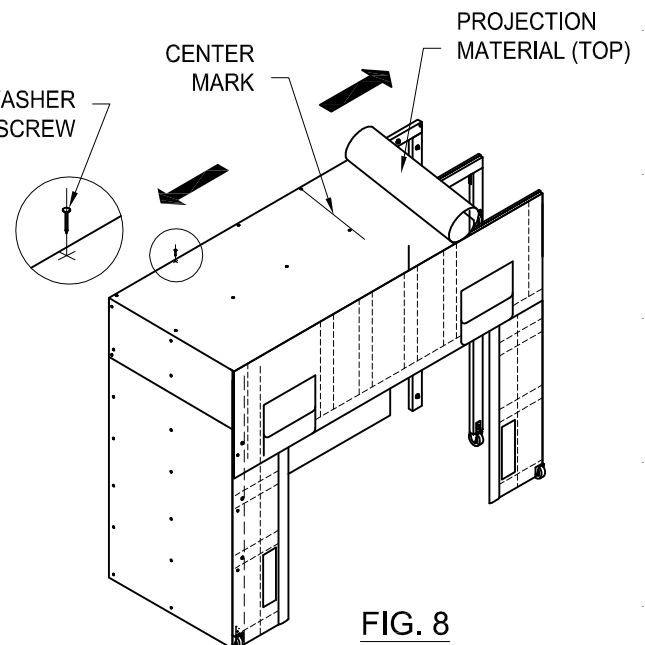


FIG. 8

9. Mount trim angle to head curtain:

- * Position trim angles over top edge of head curtain (fig. 9).
- * Secure with 1/4" x 1 1/2" hex washer tek screws and 1/4" washers through predrilled holes on trim angle.

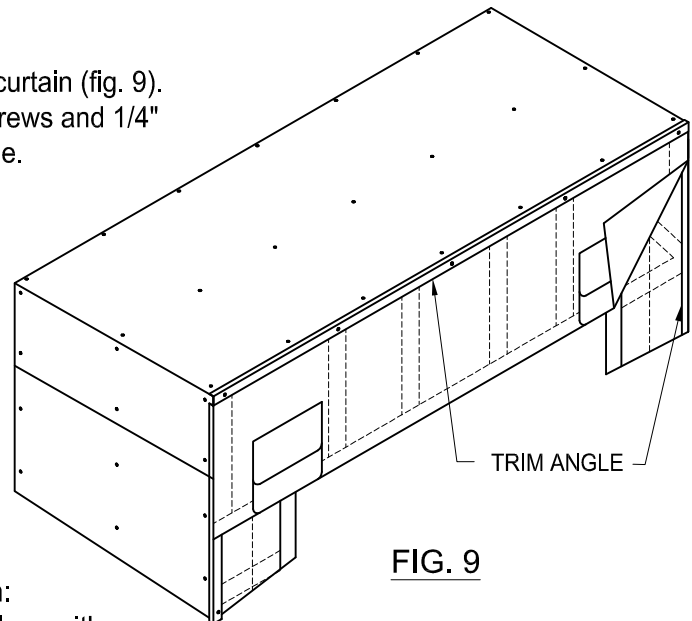


FIG. 9

10. Secure stays for vertical panels and head curtain:

- * Using 1/4" x 1 1/2" hex washer tek screws along with 3/8" flat washers; fasten vertical panels and header curtain by screwing through the center of each stay, close to the trim angle (fig. 10).

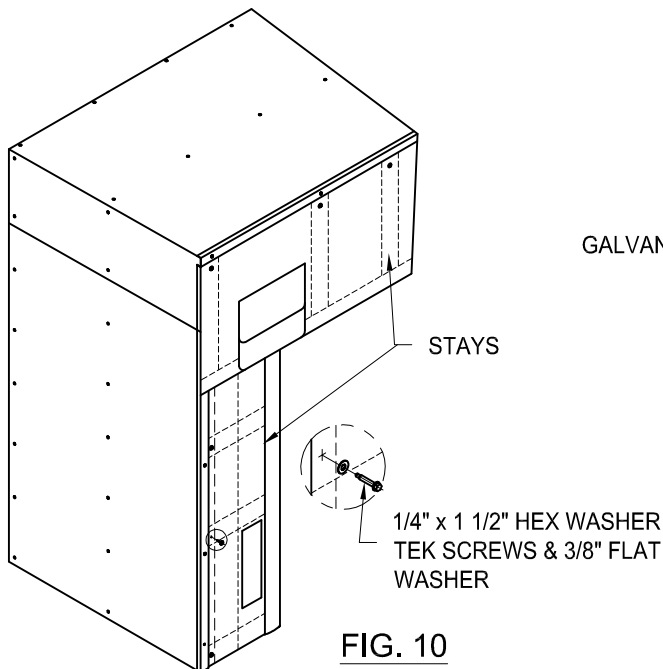


FIG. 10

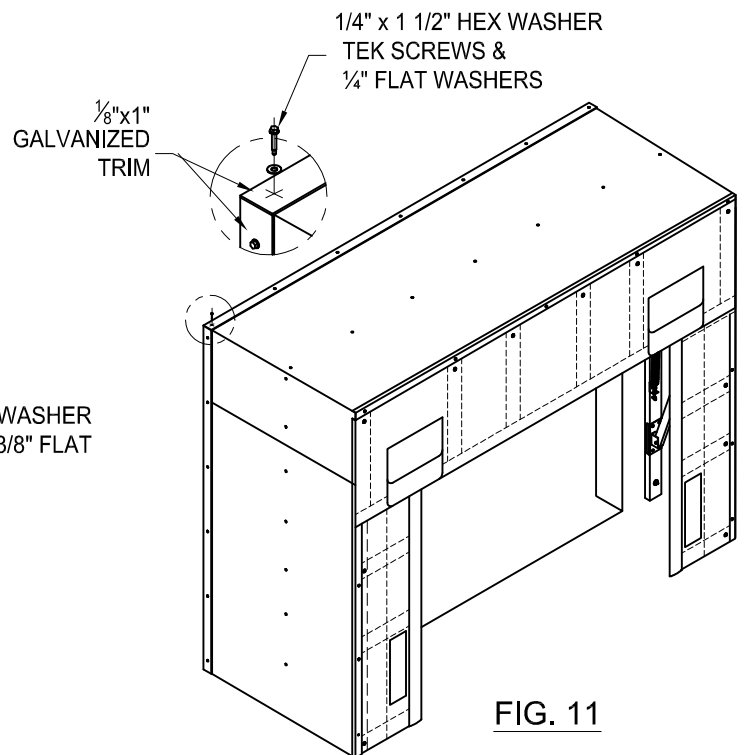


FIG. 11

11. Mount 1/8"x1" Galvanized trim:

- * Fasten the 1/8"x1" galvanized trim flush with the outside frame of the unit and building wall, using 1/4" x 1 1/2" hex washer tek screws & 1/4" flat washers (fig. 11).

12. Attach head curtain wind straps to side frames:

- * Secure wind straps with $\frac{1}{4}$ " x $1\frac{1}{2}$ " hex washer tek screws and $\frac{1}{4}$ " BS flat washers (fig. 12). Bungee must be snug.

13. Caulk between head frame and wall: **Outside only.**

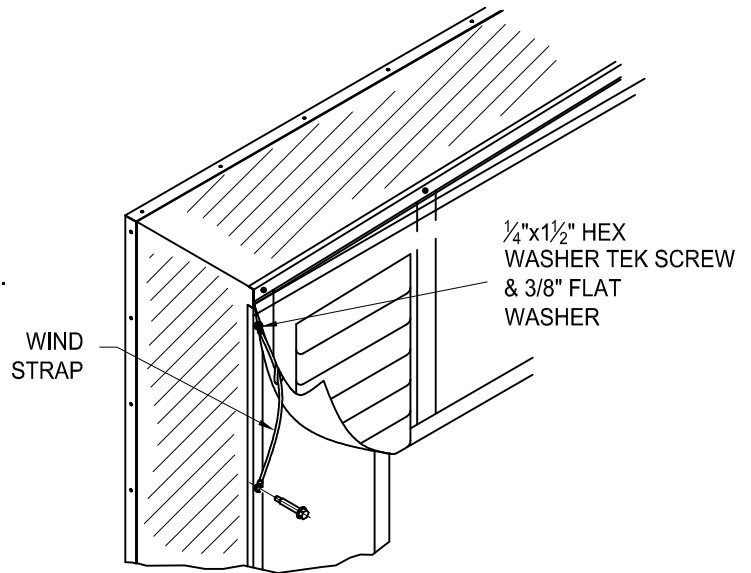


FIG. 12

14. Draft Flap Option.

a. Install draft flap.

- * Place draft flap into place (as shown in fig. 13) and use grommeted holes to mark hole locations.

- * Using $\frac{3}{8}$ " concrete drill bit, drill 2 holes into concrete.

- * Insert sleeve anchors through main back flap and into wall.

tighten with wrench.

- * Use wood screw to fasten back tab to vertical frame member.

- * Attach velcroed tab on draft flap to velcroed section of inward panel.

b. Attach rope.

- * Unravel rope.

- * Pull up on rope and locate a fastening position on the front vertical frame member.

- * Using wood screw and washer, secure rope to frame.

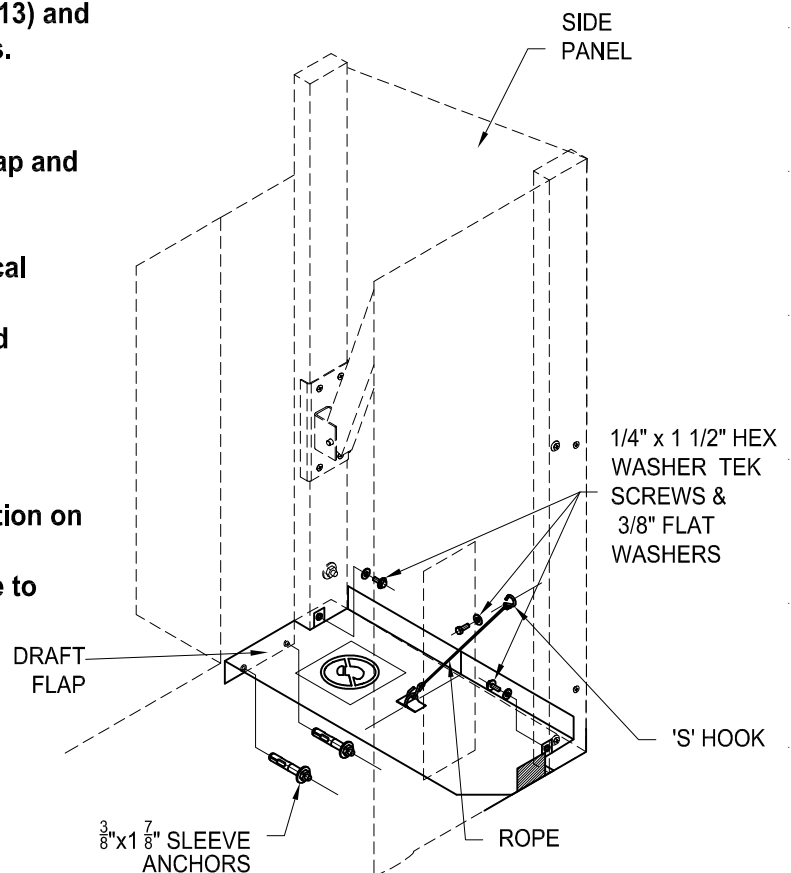


FIG. 13

Care & Maintenance

Some Maintenance is required to keep the Model 501 Shelter operating efficiently. At times it may be necessary to remove snow build-up from on top of the header.

Inspect

- * All fasteners used to attach unit to building wall .
- * All fasteners used on scissor assemblies .
- * Projection fabric , ensure perimeter of fabric is properly attached to frame perimeter. (see installation instruction for proper fit)
- * Spring tension is sufficient to extend unit.
- * Header curtain and Vertical panels are correctly attached.
- * Wind straps are correctly fastened and in working order .

See components parts list for description of replacement parts required or contact your local dealer for more information.

Metal hoods are recommended for protection of seals and shelters against possible damage from rain, snow, and ice on docks which do not have building projections and/or canopies .

Occasional cleaning of the seal or shelter is recommended. Use a low pressure hose, or damp cloth to wash the unit.