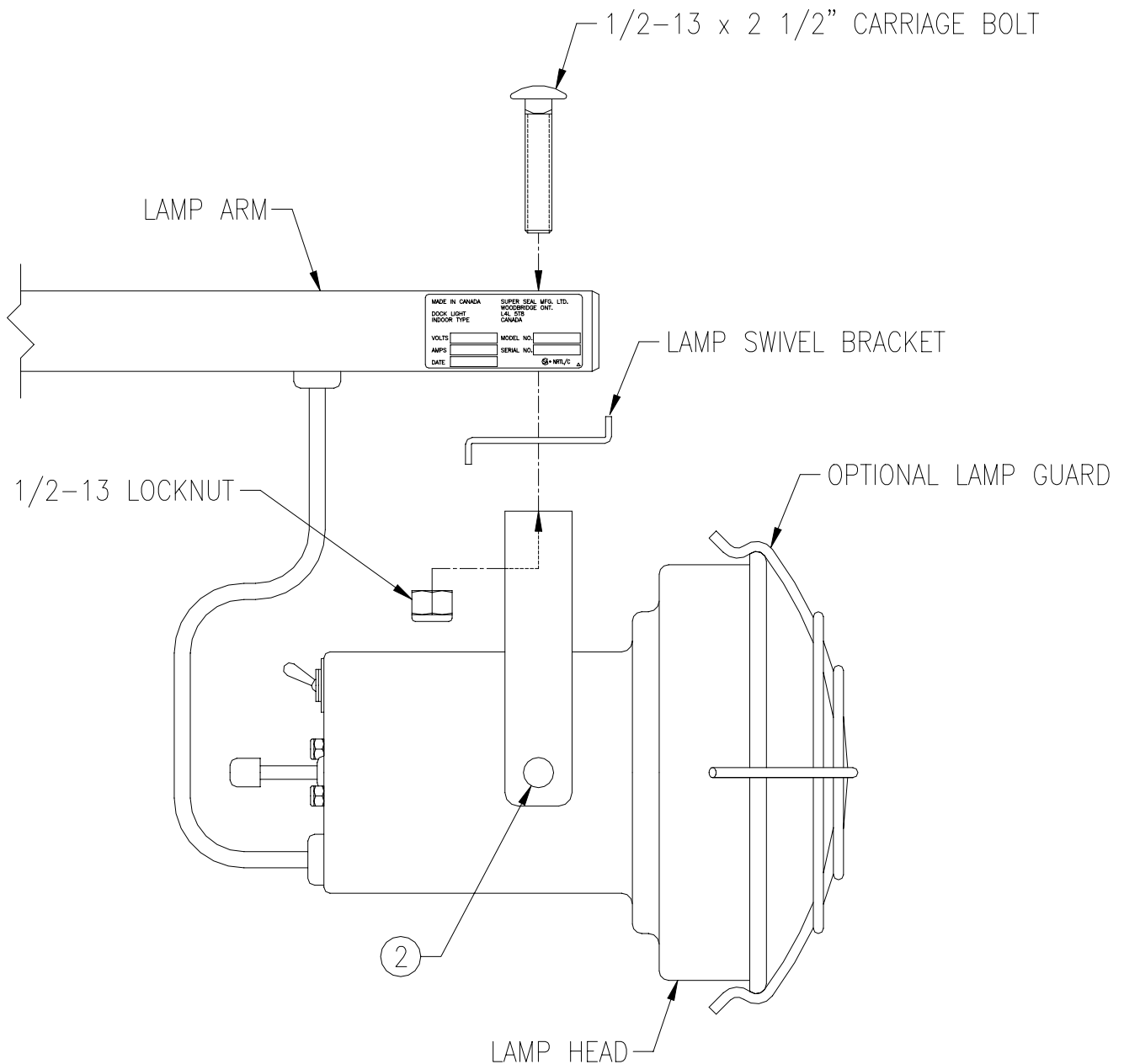


DOCK LIGHT ASSEMBLY INSTRUCTIONS

- ① ATTACH LAMP HEAD AS ILLUSTRATED BELOW
- ② VERTICAL PIVOT FRICTION CAN BE ADJUSTED WITH THE TWO LOCKNUTS INSIDE THE LAMP HOUSING AT LOCATION INDICATED



CAUTION

do not remove docklight
from box by pulling on
lamp head or wires.

ATTENTION

ne pas tirer sur
le cable d'électricité en sortant
la lumière de la boîte.