

1. VINYL COATED POLYESTER SCREENING
2. PAINTED STEEL UPRIGHTS C/W 4" TRACK
3. FABRIC ROLL DRUM
4. \*\*\*BOTTOM BAR LOCK
5. STABILIZER BAR & YELLOW RIB
6. \*\*COUNTER WEIGHT BAR
7. \*\*COUNTER WEIGHT COVER
8. \*\*\*HANDLE & PULL CHAIN
9. FABRIC CANOPY

**NOTE:**  
 THIS BUG SCREEN IS FOR DOOR OPENING WIDTHS 120" OR LESS.  
 \*\* NOT APPLICABLE WITH SPRING COUNTERWEIGHT OPTION.  
 \*\*\* NOT APPLICABLE WITH MOTORIZED OPTION.  
 \*\*\*\* 15" REQUIRED FOR DOOR OPENING 14' OR HIGHER

S.S. QUOTE REF. # \_\_\_\_\_  
 CUSTOMER \_\_\_\_\_  
 APPROVED BY: \_\_\_\_\_  
 P/O No.: \_\_\_\_\_  
 DATE: \_\_\_\_\_

DOOR OPENING

W \_\_\_\_\_ x H \_\_\_\_\_

QUANTITY: \_\_\_\_\_

PROJECTION: \_\_\_\_\_

COUNTERWEIGHT SIDE

LEFT  RIGHT

HORIZONTAL STORE

VERTICAL STORE

FABRIC:

STANDARD BLACK MESH C/W

HORIZONTAL YELLOW RIB POKETS

OPTIONS (CHECK DESIRED OPTIONS)

BAKERY SCREEN

HOT DIP GALVANIZED STEEL FRAME

1" KEYED SHAFT

MANUAL CHAIN OPERATOR

LEFT SIDE  RIGHT SIDE

IN TUBE MOTOR

LEFT SIDE  RIGHT SIDE

SOLID FABRIC PANEL 40oz VINYL

COLOUR \_\_\_\_\_

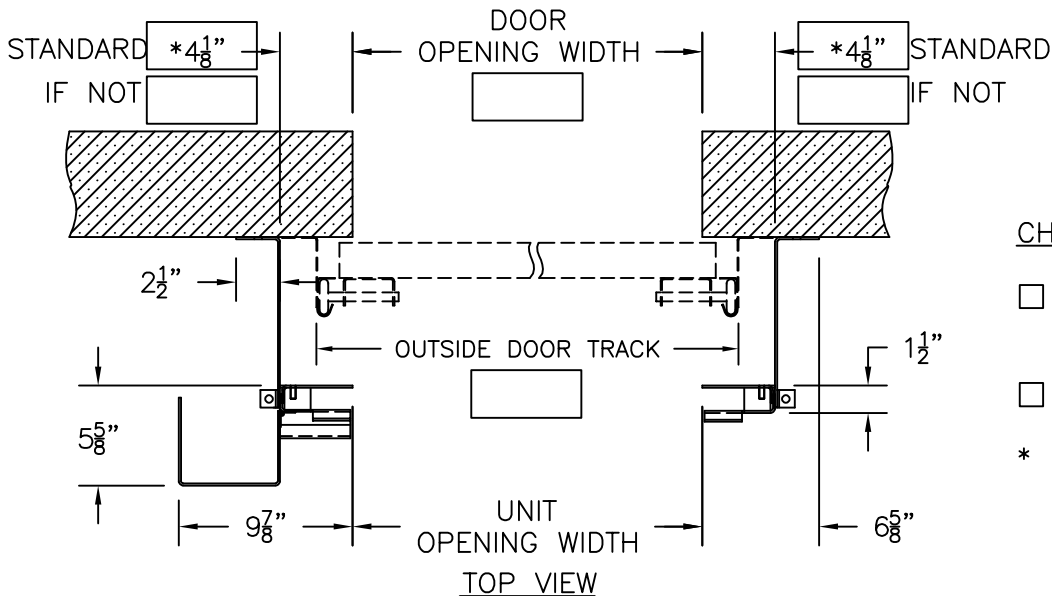
OPTIONAL WINDOW SIZE \_\_\_\_\_



SERIES 8000 BUG MANUAL ROLL-UP DOOR  
 LITERATURE DRAWING

DATE: MAY-24-18	SCALE: 1:24
DRAWN: OC, AC, AS	DWG NO: L8000-PM /1
APPROVED: ST	PART #: N/A

PROJECTION MOUNT  
(FOR DOOR OPENING WIDTHS LESS THAN OR EQUAL TO 120")

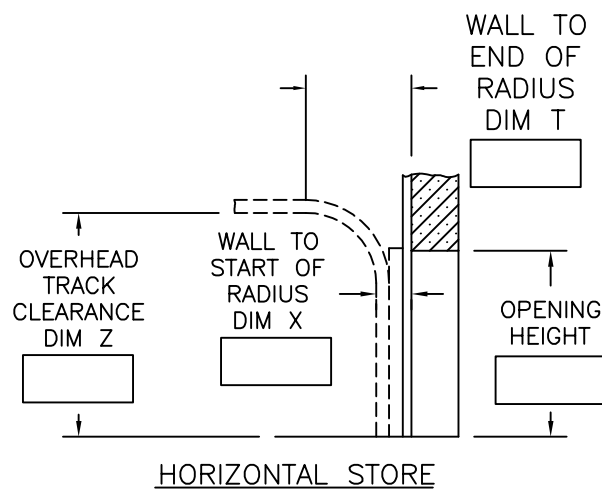
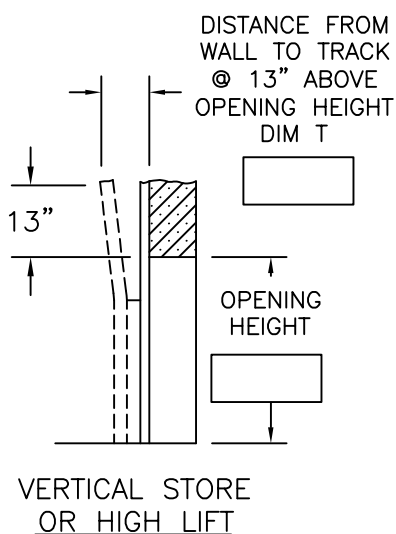


CHECK ONE:

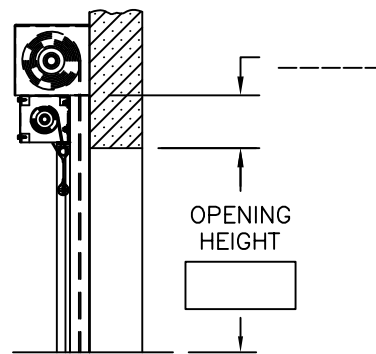
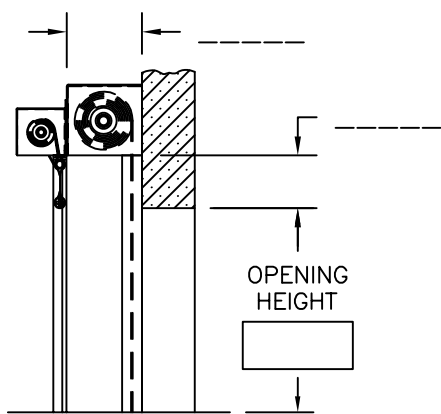
COUNTERWEIGHT ON LEFT SIDE (AS SHOWN)

COUNTERWEIGHT ON RIGHT SIDE

\* CAN BE ADJUSTED



ARE ANY OVERHEAD DOOR PANELS HIGHER THAN 24"? (Y/N) \_\_\_\_\_  
IF SO, HOW HIGH? \_\_\_\_\_



PLEASE ANSWER THE FOLLOWING QUESTIONS:

DOES ANY HARDWARE PROJECT BEYOND EDGE OF TRACK (i.e. BOLLARDS)? (Y/N) \_\_\_\_\_  
IF SO, BY HOW MUCH? \_\_\_\_\_