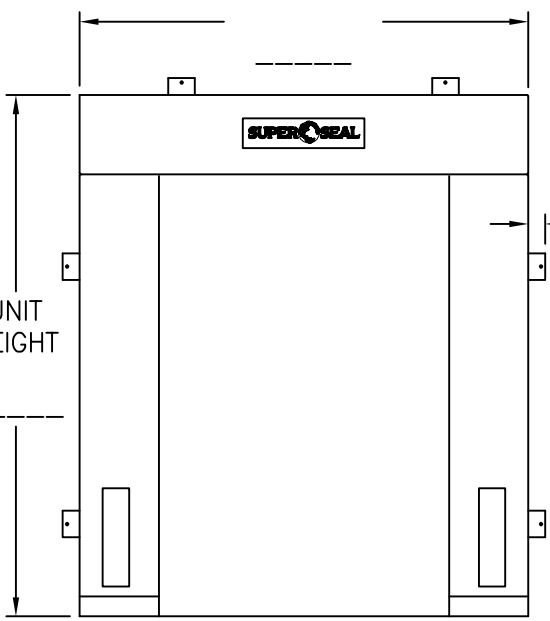


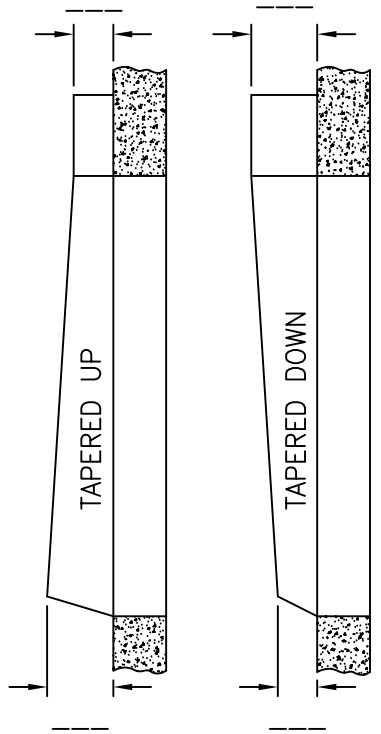
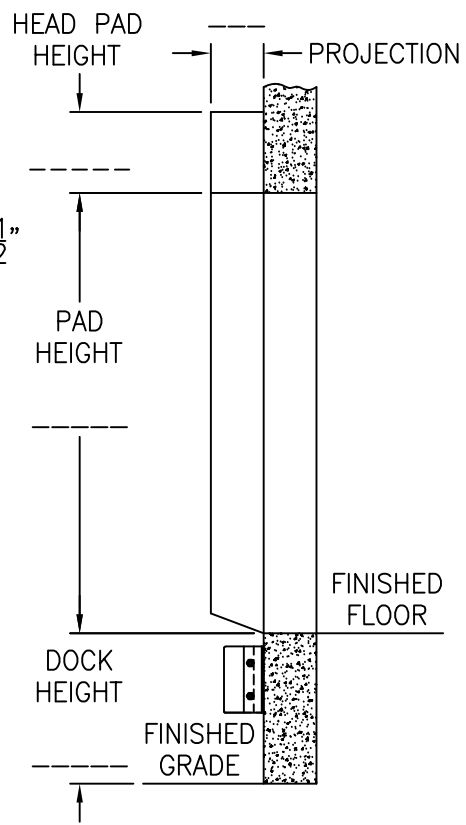
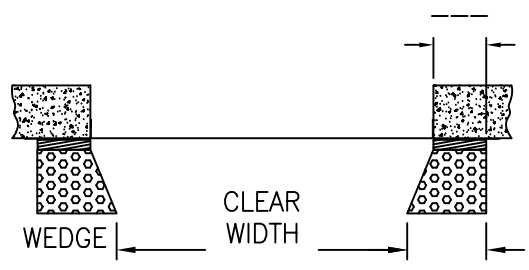
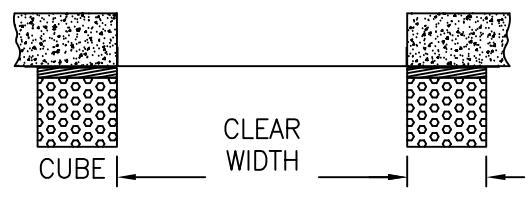
UNIT WIDTH

UNIT HEIGHT

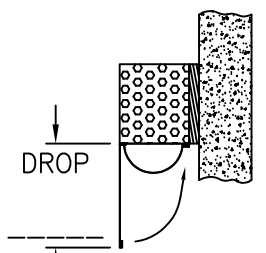


BOTTOM SEAL

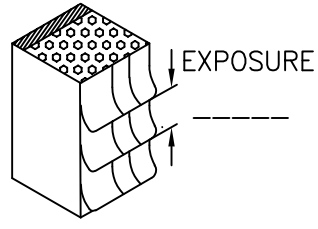
WIDTH



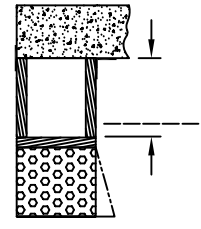
TAPERED UNITS



TOUCH & HOLD VELCRO CURTAIN OR PVC DROP CURTAIN



PROTECTIVE FLAPS



PROJECTION BOX

DOOR OPENING: \_\_\_\_\_ W \_\_\_\_\_ H  
QUANTITY: \_\_\_\_\_  
COVER FABRIC: \_\_\_\_\_  
COLOR: \_\_\_\_\_

OPTIONS (CHECK BOX IF APPLICABLE)

- EXTRA VERTICAL PAD HEIGHT
  - HIGHER HEAD PAD
  - EXTRA PROJECTION (FOAM ONLY)
  - PROJECTION BOX
  - PROTECTIVE FLAPS  
FABRIC TYPE: \_\_\_\_\_  
COLOR: \_\_\_\_\_
  - DOUBLE LAYER ON IMPACT AREA  
FABRIC TYPE: \_\_\_\_\_  
COLOR: \_\_\_\_\_
  - TOUCH & HOLD VELCRO DROP CURTAIN
  - 8" LT PVC FULL OVERLAP DROP CURTAIN
  - 66oz VINYL FLAPS ON CORNERS ONLY  
 BLUE  BLACK  ORANGE
  - BOTTOM SEAL
  - PVC PROTECTIVE VERTICAL WEAR PANEL
  - SECURITY SEAL  
 48"H  96"H
  - FULL HEIGHT YELLOW GUIDE STRIPE
  - GALVANIZED STEEL CHANNEL BACKING
  - SCUFF GUARD (48" HIGH STANDARD)
- (NOTE: DOCK BUMPERS NOT INCLUDED)

S.S. QUOTE REF. # \_\_\_\_\_  
 CUSTOMER \_\_\_\_\_  
 APPROVED BY: \_\_\_\_\_  
 P/O No.: \_\_\_\_\_  
 DATE: \_\_\_\_\_



0101 SERIES  
FIXED HEAD PAD TRUCK DOCK SEAL

DATE: DEC-19-22	SCALE: -
DRAWN: AX, OC, AS	DWG NO: L101-C
APPROVED: RT, ST	PART NO: -