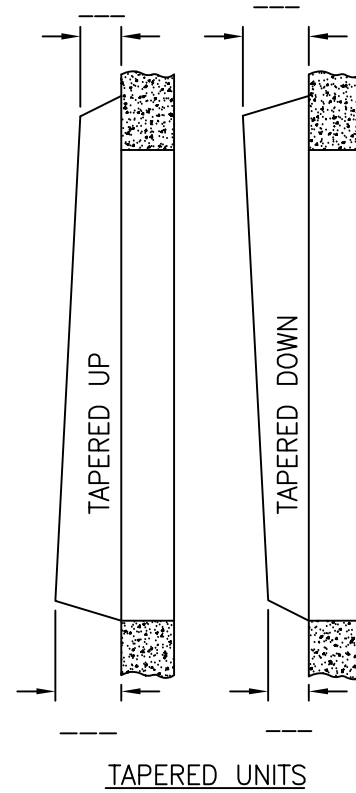
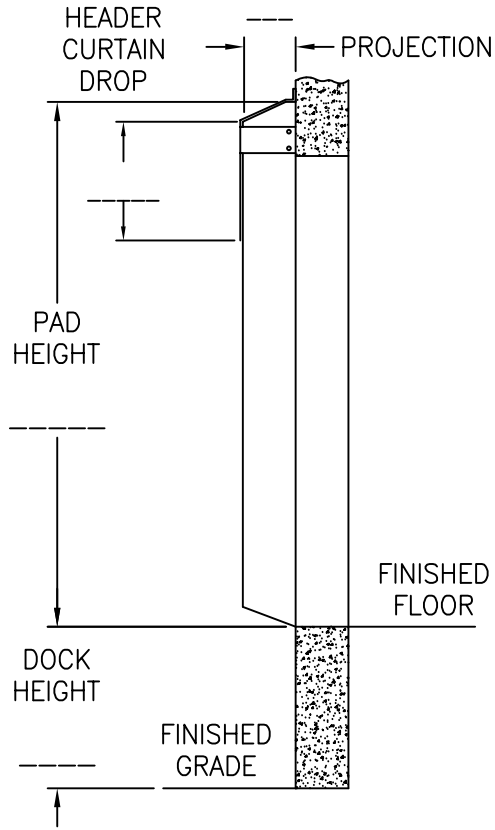
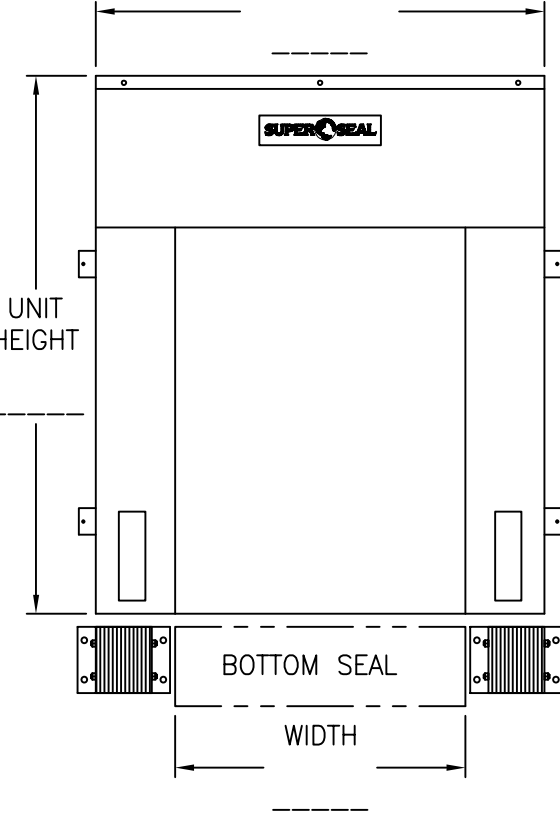


UNIT WIDTH



DOOR OPENING:

\_\_\_\_\_W\_\_\_\_\_H

QUANTITY: \_\_\_\_\_

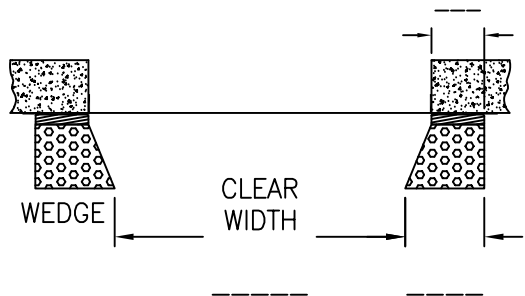
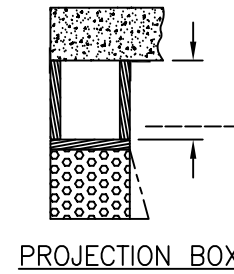
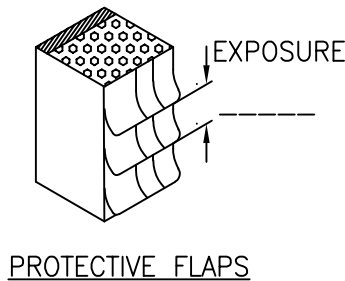
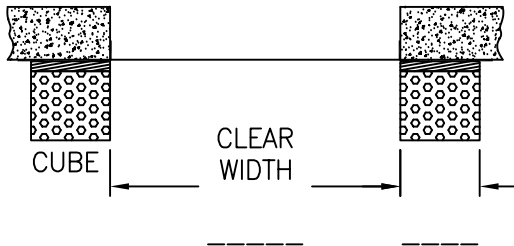
COVER FABRIC: \_\_\_\_\_

COLOR: \_\_\_\_\_

OPTIONS (CHECK BOX IF APPLICABLE)

- EXTRA VERTICAL PAD HEIGHT
- EXTRA HEADER CURTAIN DROP
- EXTRA PROJECTION (FOAM ONLY)
- PROJECTION BOX
- PROTECTIVE FLAPS
  - FABRIC TYPE: \_\_\_\_\_
  - COLOR: \_\_\_\_\_
- DOUBLE LAYER ON IMPACT AREA
  - FABRIC TYPE: \_\_\_\_\_
  - COLOR: \_\_\_\_\_
- SPLIT CURTAIN
  - VELCRO     NO VELCRO
- PVC CURTAIN IN LIEU OF FABRIC CURTAIN
- 66oz VINYL FLAPS ON CORNERS ONLY
  - BLUE     BLACK     ORANGE
- BOTTOM SEAL
- PVC PROTECTIVE VERTICAL WEAR PANEL
- SECURITY SEAL
- FULL HEIGHT YELLOW GUIDE STRIPE
- GALVANIZED STEEL CHANNEL BACKING
- SCUFF GUARD (48" HIGH STANDARD)

(NOTE: DOCK BUMPERS NOT INCLUDED)



S.S. QUOTE REF. # \_\_\_\_\_

CUSTOMER \_\_\_\_\_

APPROVED BY: \_\_\_\_\_

P/O No.: \_\_\_\_\_

DATE: \_\_\_\_\_



SERIES 0201  
ADJUSTABLE CURTAIN TRUCK DOCK SEAL

|                   |                |
|-------------------|----------------|
| DATE: DEC-19-22   | SCALE: -       |
| DRAWN: AX, OC, AS | DWG NO: L201-B |
| APPROVED: RT, ST  | PART NO: -     |