

- 1-DOOR FABRIC
 2-STEEL UPRIGHT C/W FRONT COVER
 3-FABRIC ROLL DRUM
 4-SOFT BREAKAWAY BOTTOM BAR C/W "SUPEREDGE SENSOR"
 5-THRESHOLD PHOTO EYE
 6-MOTOR C/W BRAKE AND GEARBOX
 7-NON METALIC NEMA 4X CONTROL PANEL
 8-1 PUSH BUTTON STATION C/W GREEN PUSH BUTTON AND RED EMERGENCY STOP
 9-WIRELESS BOTTOM BAR CONTROLLER
 10-MANUAL CRANK HANDLE
 11-ENCODER BOX
 12-AUTO RETURN FEATURE

DOOR OPENING

_____ W x _____ H

QUANTITY: _____

POWER: _____ VOLTS _____ PHASE

SPEED ☐ SINGLE-32 ☐ DUAL-50 ☐ DUAL-100

MOTOR LOCATION ☐ LEFT ☐ RIGHT

CONTROL PANEL ☐ LEFT ☐ RIGHT

FABRIC TYPE: _____

FABRIC COLOUR: _____

OPTIONS-ACTIVATION (CHECK DESIRED OPTIONS)

- ☐ FLOOR LOOP DETECTOR (WIRE BY OTHERS)
☐ PHOTO EYE QUANTITY _____ Pcs
 ☐ REFLECTIVE ☐ THRU-BEAM
☐ MOTION DETECTOR QUANTITY _____ Pcs
☐ RADIO CONTROL(STD. 2 TRANSMITTERS)
 ☐ SINGLE BUTTON ☐ MULTI-BUTTON _____ Pcs
☐ GREEN PUSH BUTTON STATION _____ Pcs
☐ EMERGENCY STOP STATION
☐ PULL CORD QUANTITY _____ Pcs
☐ COMBO STATION-GREEN PUSH
 BUTTON STATION EMERGENCY STOP
☐ OTHER _____

OPTIONS-EXTRA REVERSING DEVICES (CHECK DESIRED OPTIONS)

- ☐ PHOTO EYE THRU-BEAM QUANTITY _____ Pcs
☐ FLOOR LOOP DETECTOR (WIRE BY OTHERS)

COMMUNICATION DEVICES

- ☐ BEACON WARNING LIGHT QUANTITY _____ Pcs
☐ HORN QUANTITY _____ Pcs
☐ TRAFFIC LIGHT QUANTITY _____ Pcs
☐ OTHER _____

OPTIONS DOOR (CHECK DESIRED OPTIONS)

- ☐ WINDOW
 ☐ FULL ☐ PARTIAL _____
☐ FABRIC ROLL CANOPY ☐ MOTOR CANOPY
 ☐ PAINTED ☐ GALVANIZED ☐ STAINLESS STEEL
☐ HOT DIP GALVANIZED FRAME
☐ STAINLESS STEEL FRAME
☐ PROJECTION FRAME _____
☐ OTHER _____

S.S. QUOTE REF. # _____

CUSTOMER _____

APPROVED BY: _____

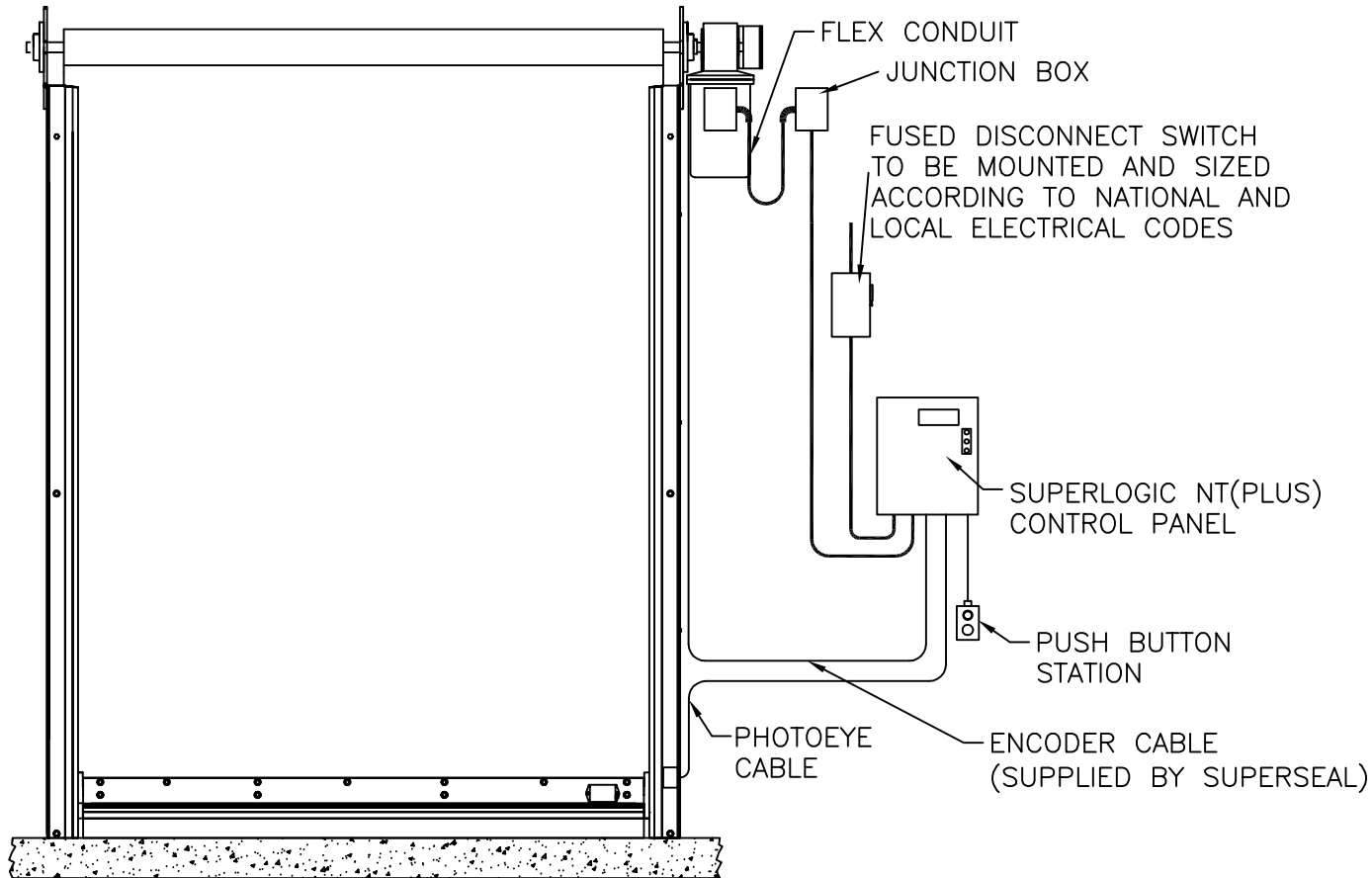
P/O No.: _____

DATE: _____



DOOR SERIES 8500 - MODEL 8500 PLATINUM
 CLEARANCE REQUIREMENTS

DATE: FEB-10-11	SCALE: 1:30
DRAWN: OC	DWG NO: L85PT-A / 1
APPROVED: -	PART NO: N/A



MAIN SUPPLY

- ☐ 208–240V, 3PH, 60Hz
- ☐ 460–480V, 3PH, 60Hz
- ☐ 575–600V, 3PH, 60Hz

RECOMMENDED FUSE SIZE

SUPERLOGIC III (SINGLE SPEED)

- ☐ 208–240V FUSE WITH 6A, TYPE CC
- ☐ 460–480V FUSE WITH 3A, TYPE CC
- ☐ 575–600V FUSE WITH 2.5A, TYPE CC

1HP 230V – FLA = 3.8A

1HP 460V – FLA = 2.2A

1HP 575V – FLA = 1.8A

SUPERLOGIC III PLUS (DUAL SPEED)

- ☐ 208–240V FUSE WITH 15A, TYPE CC
- ☐ 460–480V FUSE WITH 8A, TYPE CC
- ☐ 575–600V FUSE WITH 6A, TYPE CC

2.5HP 230V – FLA = 6.4A

2.5HP 460V – FLA = 3.7A

2.5HP 575V – FLA = 3.0A

3.0HP 230V – FLA = 7.4A

3.0HP 460V – FLA = 4.3A

3.0HP 575V – FLA = 2.6A

NOTE

LOW VOLTAGE MUST BE WIRED SEPARATE AND APART
FROM HIGH VOLTAGE WIRING

NOTE

NOT SUPPLIED BY SUPERSEAL:

- ALL ANCHORING AND SPECIAL BRACKETS REQUIRED FOR INSTALLATION.
- ALL CONDUIT, WIRING, EXTERNAL DEVICE INSTALLATION AND LABOUR.
- WIRING UNLESS OTHERWISE SPECIFIED.
- FUSED DISCONNECT.



DOOR SERIES 8500 PLATINUM
TYPICAL WIRING LAYOUT

DATE: Aug.18/2008	SCALE: N.T.S.
DRAWN: AX	DWG NO: L85PT-A / 2
APPROVED: G. ION	PART NO: N/A