

DOOR OPENING:

\_\_\_\_\_ W \_\_\_\_\_ H

QUANTITY: \_\_\_\_\_

COVER FABRIC: \_\_\_\_\_

COLOR: \_\_\_\_\_

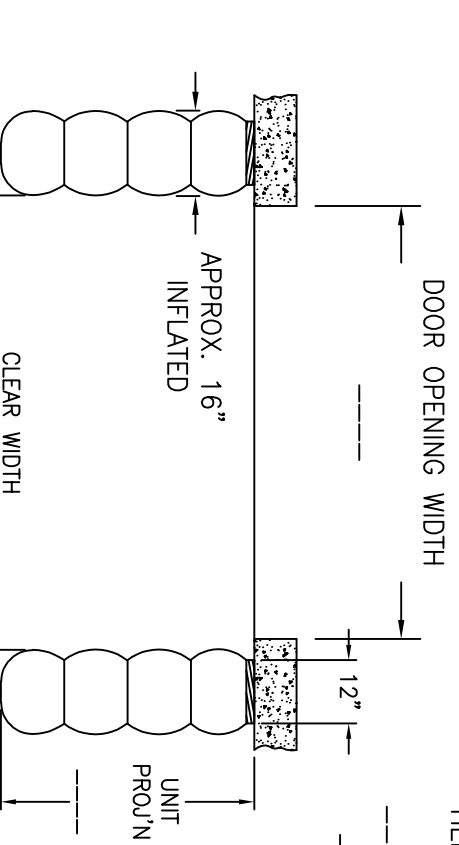
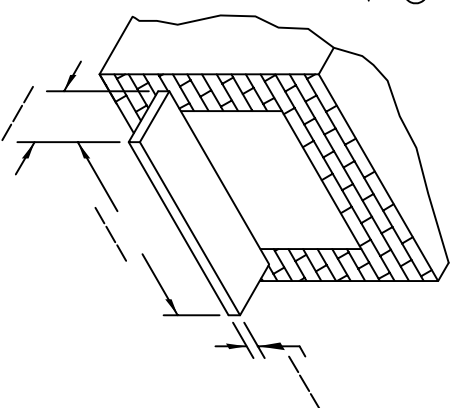
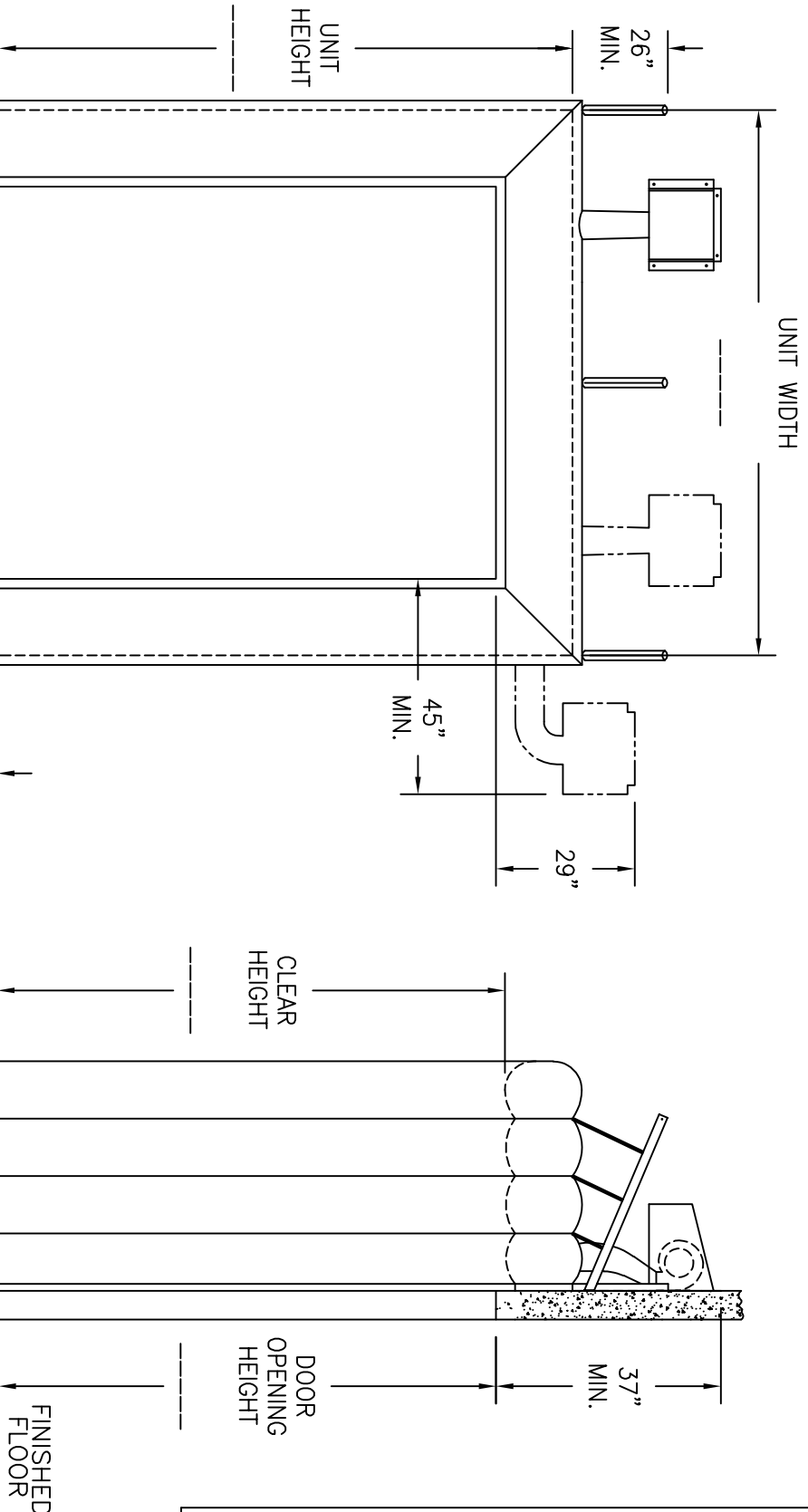
OPTIONS (CHECK BOX IF APPLICABLE)

BLOWER POSITION:

- ☐ TOP LEFT
- ☐ TOP RIGHT
- ☐ SIDE LEFT
- ☐ SIDE RIGHT

☐ MOTOR/BLOWER, 1/2 HP, 2850 RPM  
(REQ'D FOR APPLICATIONS OUTSIDE  
NORTH AMERICA)

- ☐ EXTRA WIDTH OF UNIT
- ☐ EXTRA HEIGHT OF UNIT
- ☐ HIGHER HEADER AIR BAG
- ☐ AUTOMATIC SWITCH KIT



S.S. QUOTE REF. # \_\_\_\_\_  
CUSTOMER \_\_\_\_\_  
APPROVED BY: \_\_\_\_\_  
P/O No.: \_\_\_\_\_  
DATE: \_\_\_\_\_



R SERIES INFLATABLE RAIL SHELTER  
3-SIDED

DATE: NOV-16-21	SCALE: N.T.S.
DRAWN: GK,AY,OC,AS	DWG NO: LR-B / 1
APPROVED: RT, ST	PART NO: -