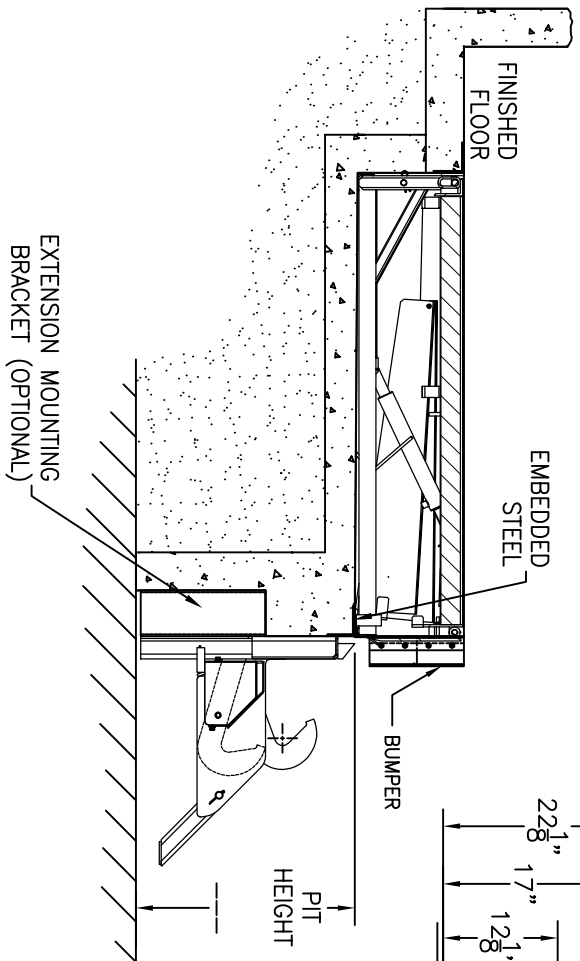
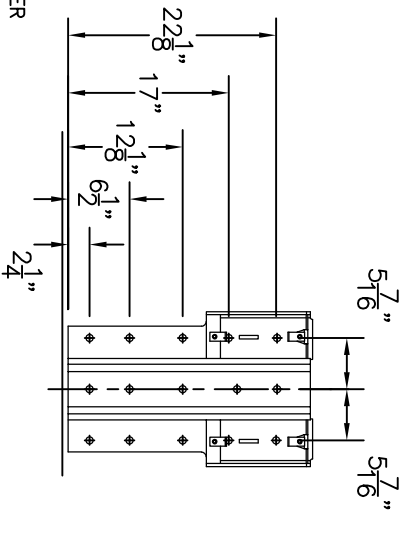
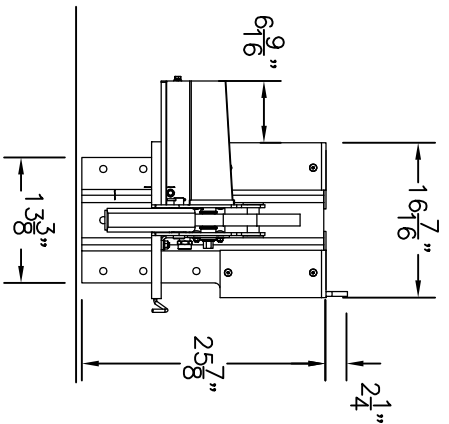
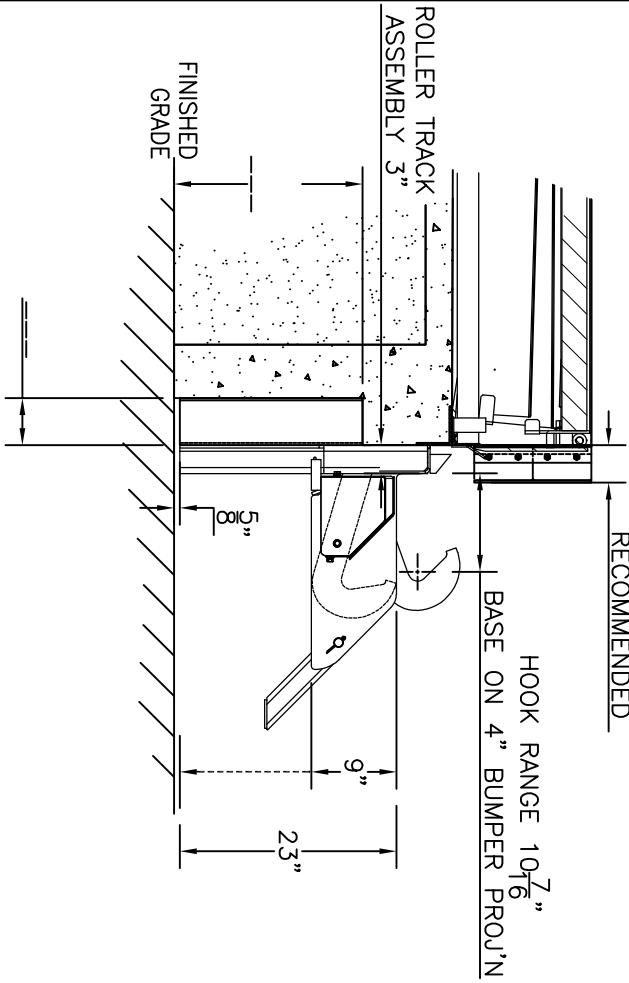


BUMPER PROJ'N
4" MINIMUM
RECOMMENDED



QUANTITY: _____

VOLTAGE:
STANDARD:

115V

OPTION:

- 208 - 220V SINGLE PHASE
- 208 - 230 VAC 3 PHASE
- 460 - 480 VAC 3 PHASE
- 575 - 600 VAC 3 PHASE

COMBO PANEL: (OPTION)

- DOCK SINGLE BUTTON (DECK LIP)
- DOCK 3 BUTTON (DECK/ LIP/ STOP)

MASTER CONTROL PANEL: (OPTION)

- OVERHEAD DOOR (OPEN/ CLOSE/ STOP)
- INFLATABLE (ON/ AUTO/ OFF) (115 VAC)
- DOCK LIGHT (ON/OFF)
- DISCONNECT (LOCKABLE + FUSED)
- INTERLOCK
- INDUCTIVE PROXIMITY SENSOR (LIP)
- PHOTO EYE PROXIMITY SENSOR (DOOR)

EXTENSION MOUNT: (OPTION)

- FULL HEIGHT
26" H X _____ PROJ
- PARTIAL HEIGHT
_____ H X _____ PROJ

NOTE: POWER TO MATCH DOCK
LEVELER MOTOR, RESTRAINT WILL
REMAIN 115VAC

S.S. QUOTE REF. # _____
CUSTOMER: _____
APPROVED BY: _____
P/O No.: _____
DATE: _____



TRUCK RESTRAINT
PYTHON STR 609
CLEARANCE REQUIREMENTS
DATE: NOV-19-21 SCALE: N.T.S.
DRAWN: KF_AS DWG NO: TR-4A
APPROVED: ST PART NO: _____