

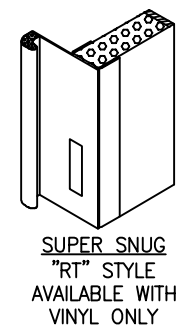
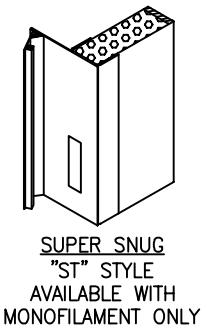
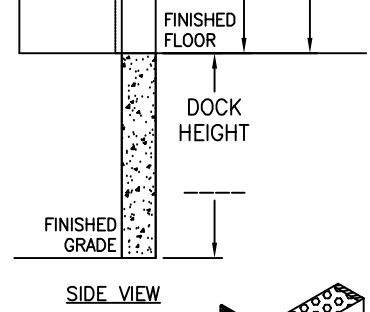
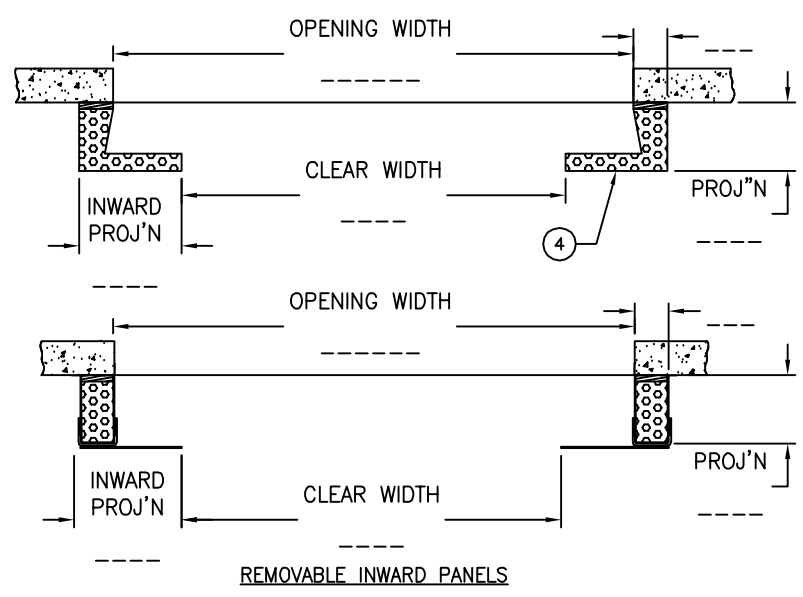
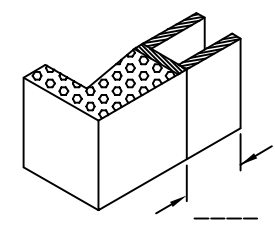
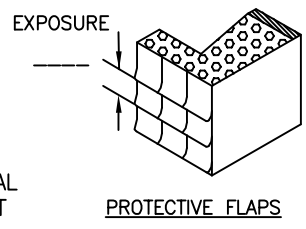
DOOR OPENING:
 _____ W _____ H
QUANTITY: _____
COVER FABRIC: _____
COLOR: _____

OPTIONS (CHECK BOX IF APPLICABLE)

- EXTRA WIDTH OF UNIT
- EXTRA HEIGHT OF UNIT
- EXTRA HEADER AIR BAG DROP
- REMOVABLE INWARD PANELS
- EXTRA PROJECTION
- PROJECTION BOX
- TAPERED UNITS

- PROTECTIVE FLAPS
 FABRIC TYPE: _____
 COLOR: _____
- REMOVABLE INWARD PANELS
 40oz VINYL MONOFILAMENT
- SUPER SNUG (ADD 6" TO INWARD PROJ'N)
 "RT" STYLE "ST" STYLE
- FULL HEIGHT YELLOW GUIDE STRIPE
- DOUBLE LAYER ON IMPACT AREA
- BOTTOM SEAL
- SECURITY SEAL
- COVER FABRIC OVERLAPS EDGES ONLY
- PVC PROTECTIVE VERTICAL WEAR PANEL
- SCUFF GUARD (48" HIGH STANDARD)
- GALVANIZED STEEL CHANNEL BACKING

- SPECIAL FOAM**
 FIRE RETARDANT
 HIGH DENSITY
- MOTOR/BLOWER 1/2 H.P. 230V
 (REQUIRED FOR APPLICATIONS
 OUTSIDE NORTH AMERICA)



- NOTES:**
- CLEARANCE ABOVE OVERALL UNIT HEIGHT FOR SUPPORT STRAPS TO BE EQUAL TO HEADER PROJ'N +2"
 - IF LIMITED HEAD ROOM, REQUEST LOWER REINFORCEMENT ARMS

- LEGEND /STANDARD UNIT:**
1. PRESSURE TREATED WOOD FRAME AND VERTICAL BACKING WITH GALVANIZED STEEL CLADDING
 2. GALVANIZED SIDE SUPPORT
 3. CANOPY SUPPORT STRAPS
 4. VERTICAL PAD (22oz VINYL) 8" WOOD BACKING
 5. YELLOW GUIDE STRIPE
 6. 1/4 HP. 115V. MOTOR /BLOWER C/W MANUAL ON/OFF SWITCH
 7. TORSION SPRING ASSEMBLY FOR THE HEADER
 8. GALVANIZED MOUNTING HARDWARE

S. S. QUOTE REF. # _____
 CUSTOMER: _____
 APPROVED BY: _____
 P/O No.: _____
 DATE: _____



V SERIES INFLATABLE DOCK SEAL L-PAD VERTICALS	
DATE: MAY-23-18	SCALE: N.T.S.
DRAWN: AX, AS	DWG NO: LV-E
APPROVED: RT, ST	PART NO: -